

IL1 β Rabbit pAb

Catalog No.: A1112 **190 Publications**

Basic Information

Observed MW

35 kDa

Calculated MW

31 kDa

Category

Primary antibody

Applications

WB,IF/ICC,IF-P,ELISA

Cross-Reactivity

Human, Mouse, Rat

Background

The protein encoded by this gene is a member of the interleukin 1 cytokine family. This cytokine is produced by activated macrophages as a proprotein, which is proteolytically processed to its active form by caspase 1 (CASP1/ICE). This cytokine is an important mediator of the inflammatory response, and is involved in a variety of cellular activities, including cell proliferation, differentiation, and apoptosis. The induction of cyclooxygenase-2 (PTGS2/COX2) by this cytokine in the central nervous system (CNS) is found to contribute to inflammatory pain hypersensitivity. Similarly, IL-1B has been implicated in human osteoarthritis pathogenesis. Patients with severe Coronavirus Disease 2019 (COVID-19) present elevated levels of pro-inflammatory cytokines such as IL-1B in bronchial alveolar lavage fluid samples. The lung damage induced by the Severe acute respiratory syndrome coronavirus 2 (SARS-CoV-2) is to a large extent, a result of the inflammatory response promoted by cytokines such as IL-1B. This gene and eight other interleukin 1 family genes form a cytokine gene cluster on chromosome 2.

Recommended Dilutions

WB	1:500 - 1:2000
IF/ICC	1:50 - 1:200
IF-P	1:50 - 1:200
ELISA	Recommended starting concentration is 1 μ g/mL. Please optimize the concentration based on your specific assay requirements.

Contact

	400-999-6126
	cn.market@abclonal.com.cn
	www.abclonal.com.cn

Immunogen Information

Gene ID

3553

Swiss Prot

P01584

Immunogen

Recombinant protein (or fragment). This information is considered to be commercially sensitive.

Synonyms

IL-1; IL1F2; IL1beta; IL1-BETA; IL1 β

Product Information

Source

Rabbit

Isotype

IgG

Purification

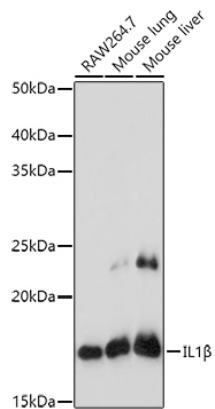
Affinity purification

Storage

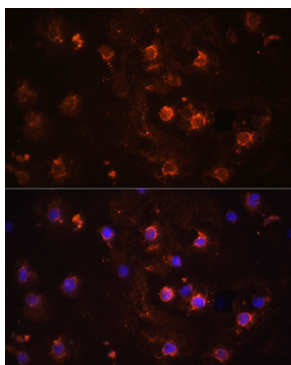
Store at -20°C. Avoid freeze / thaw cycles.

Buffer: PBS with 0.09% sodium azide, 50% glycerol, pH 7.3.

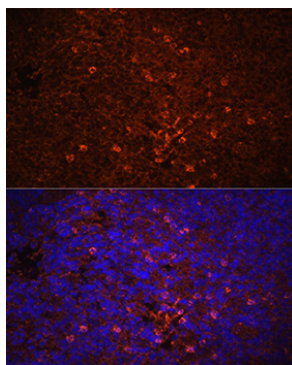
Validation Data



Western blot analysis of various lysates using IL1 β Rabbit pAb (A1112) at 1:1000 dilution. Secondary antibody: HRP-conjugated Goat anti-Rabbit IgG (H+L) (AS014) at 1:10000 dilution. Lysates/proteins: 25 μ g per lane. Blocking buffer: 3% nonfat dry milk in TBST. Detection: ECL Basic Kit (RM00020). Exposure time: 180s.



Immunofluorescence analysis of THP-1 cells using IL1 β Rabbit pAb (A1112) at dilution of 1:100. Blue: DAPI for nuclear staining.



Immunofluorescence analysis of Rat spleen using IL1 β Rabbit pAb (A1112) at dilution of 1:100. Blue: DAPI for nuclear staining.