

Lipocalin-2/NGAL Rabbit pAb

Catalog No.: A11130

Basic Information

Observed MW

20kDa

Calculated MW

23kDa

Category

Primary antibody

Applications

ELISA, WB, IF/ICC

Cross-Reactivity

Human

Background

This gene encodes a protein that belongs to the lipocalin family. Members of this family transport small hydrophobic molecules such as lipids, steroid hormones and retinoids. The protein encoded by this gene is a neutrophil gelatinase-associated lipocalin and plays a role in innate immunity by limiting bacterial growth as a result of sequestering iron-containing siderophores. The presence of this protein in blood and urine is an early biomarker of acute kidney injury. This protein is thought to be involved in multiple cellular processes, including maintenance of skin homeostasis, and suppression of invasiveness and metastasis. Mice lacking this gene are more susceptible to bacterial infection than wild type mice.

Recommended Dilutions

WB 1:100 - 1:500

IF/ICC 1:10 - 1:100

Immunogen Information

Gene ID

3934

Swiss Prot

P80188

Immunogen

Recombinant fusion protein containing a sequence corresponding to amino acids 21-198 of human Lipocalin-2/NGAL (NP_005555.2).

Synonyms

p25; 24p3; MSFI; NGAL; Lipocalin-2/NGAL

Contact

☎ | 400-999-6126

✉ | cn.market@abclonal.com.cn

🌐 | www.abclonal.com.cn

Product Information

Source

Rabbit

Isotype

IgG

Purification

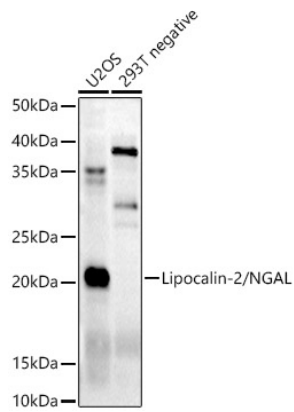
Affinity purification

Storage

Store at -20°C. Avoid freeze / thaw cycles.

Buffer: PBS with 0.05% proclin300, 50% glycerol, pH7.3.

Validation Data



Western blot analysis of extracts of various cell lines, using Lipocalin-2/NGAL antibody (A11130) at 1:500 dilution.

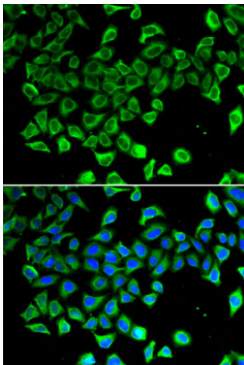
Secondary antibody: HRP Goat Anti-Rabbit IgG (H+L) (AS014) at 1:10000 dilution.

Lysates/proteins: 25µg per lane.

Blocking buffer: 3% nonfat dry milk in TBST.

Detection: ECL Basic Kit (RM00020).

Exposure time: 60s.



Immunofluorescence analysis of A-549 cells using Lipocalin-2/NGAL antibody (A11130). Blue: DAPI for nuclear staining.