

# IL18 Rabbit pAb

Catalog No.: A1115 **82 Publications**

## Basic Information

### Observed MW

18kDa

### Calculated MW

22kDa

### Category

Primary antibody

### Applications

ELISA, WB, IP

### Cross-Reactivity

Human

## Background

The protein encoded by this gene is a proinflammatory cytokine of the IL-1 family that is constitutively found as a precursor within the cytoplasm of a variety of cells including macrophages and keratinocytes. The inactive IL-18 precursor is processed to its active form by caspase-1, and is capable of stimulating interferon gamma production, and of regulating both T helper (Th) 1 and Th2 responses. This cytokine has been implicated in the injury of different organs, and in potentially fatal conditions characterized by a cytokine storm. In humans, IL-18 gene is located on chromosome 11. Alternatively spliced transcript variants encoding different isoforms have been found for this gene.

## Recommended Dilutions

**WB** 1:500 - 1:1000

**IP** 0.5µg-4µg antibody for  
200µg-400µg extracts of  
whole cells

## Immunogen Information

### Gene ID

3606

### Swiss Prot

Q14116

### Immunogen

A synthetic peptide corresponding to a sequence within amino acids 37-193 of human IL18 (NP\_001553.1).

### Synonyms

IGIF; IL-18; IL-1g; IL1F4; IL18

## Contact

☎ | 400-999-6126

✉ | [cn.market@abclonal.com.cn](mailto:cn.market@abclonal.com.cn)

🌐 | [www.abclonal.com.cn](http://www.abclonal.com.cn)

## Product Information

### Source

Rabbit

### Isotype

IgG

### Purification

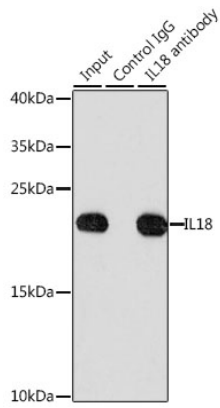
Affinity purification

### Storage

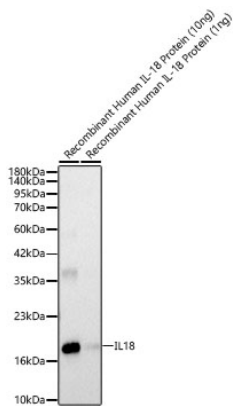
Store at -20°C. Avoid freeze / thaw cycles.

Buffer: PBS with 0.05% proclin300, 50% glycerol, pH7.3.

## Validation Data



Immunoprecipitation analysis of 200 µg extracts of HeLa cells, using 3 µg IL18 antibody (A1115). Western blot was performed from the immunoprecipitate using IL18 antibody (A1115) at a dilution of 1:1000.



Western blot analysis of recombinant Human IL-18 Protein using IL18 Rabbit pAb (A1115) at 1:500 dilution.

Secondary antibody: HRP Goat Anti-Rabbit IgG (H+L) (AS014) at 1:10000 dilution.

Lysates/proteins: 10 ng/1 ng per lane.

Blocking buffer: 3% nonfat dry milk in TBST.

Detection: ECL Basic Kit (RM00020).

Exposure time: 20s.