

# MTCO2 Rabbit pAb

Catalog No.: A11154 **1 Publications**

## Basic Information

### Observed MW

24kDa

### Calculated MW

26kDa

### Category

Primary antibody

### Applications

WB,IHC-P,IF/ICC,(ELISA)

### Cross-Reactivity

Human, Mouse, Rat

## Background

Predicted to enable copper ion binding activity and oxidoreductase activity. Predicted to contribute to cytochrome-c oxidase activity. Predicted to be involved in ATP synthesis coupled electron transport; positive regulation of cellular biosynthetic process; and positive regulation of necrotic cell death. Located in mitochondrion. Is expressed in embryo; epiblast; heart; liver; and metanephros. Orthologous to several human genes including MTCO2P12 (MT-CO2 pseudogene 12).

## Recommended Dilutions

**WB** 1:500 - 1:2000

**IHC-P** 1:100 - 1:500

**IF/ICC** 1:50 - 1:200

**ELISA** Recommended starting concentration is 1 µg/mL. Please optimize the concentration based on your specific assay requirements.

## Immunogen Information

### Gene ID

17709

### Swiss Prot

P00403

### Immunogen

A synthetic peptide corresponding to a sequence within amino acids 101-200 of mouse MTCO2 (NP\_904331.1).

### Synonyms

COX2; MTCO2

## Contact

☎ | 400-999-6126

✉ | [cn.market@abclonal.com.cn](mailto:cn.market@abclonal.com.cn)

🌐 | [www.abclonal.com.cn](http://www.abclonal.com.cn)

## Product Information

### Source

Rabbit

### Isotype

IgG

### Purification

Affinity purification

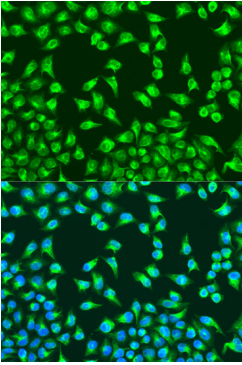
### Storage

Store at -20°C. Avoid freeze / thaw cycles.

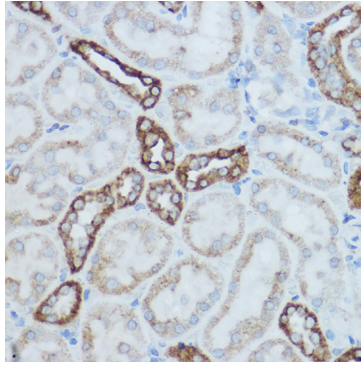
Buffer: PBS with 0.02% sodium azide,50% glycerol,pH7.3.

## Validation Data

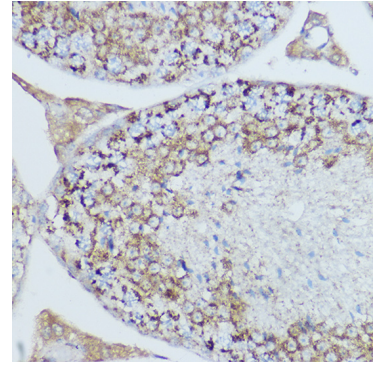
---



Immunofluorescence analysis of U2OS cells using MTCO2 Rabbit pAb (A11154) at dilution of 1:100. Secondary antibody: Cy3-conjugated Goat anti-Rabbit IgG (H+L) (AS007) at 1:500 dilution. Blue: DAPI for nuclear staining.



Immunohistochemistry analysis of paraffin-embedded Mouse kidney using MTCO2 Rabbit pAb (A11154) at dilution of 1:500 (40x lens). High pressure antigen retrieval performed with 0.01M Citrate Bufferr (pH 6.0) prior to IHC staining.



Immunohistochemistry analysis of paraffin-embedded Rat testis using MTCO2 Rabbit pAb (A11154) at dilution of 1:500 (40x lens). High pressure antigen retrieval performed with 0.01M Citrate Bufferr (pH 6.0) prior to IHC staining.