

# Complement C3 Rabbit mAb

Catalog No.: A11196 **Recombinant**

## Basic Information

### Observed MW

115kDa/187kDa

### Calculated MW

187kDa

### Category

Primary antibody

### Applications

WB,ELISA

### Cross-Reactivity

Human

### CloneNo number

ARC0541

## Background

Complement component C3 plays a central role in the activation of complement system. Its activation is required for both classical and alternative complement activation pathways. The encoded preproprotein is proteolytically processed to generate alpha and beta subunits that form the mature protein, which is then further processed to generate numerous peptide products. The C3a peptide, also known as the C3a anaphylatoxin, modulates inflammation and possesses antimicrobial activity. Mutations in this gene are associated with atypical hemolytic uremic syndrome and age-related macular degeneration in human patients.

## Recommended Dilutions

**WB** 1:1000 - 1:2000

**ELISA** Recommended starting concentration is 1 µg/mL. Please optimize the concentration based on your specific assay requirements.

## Immunogen Information

### Gene ID

718

### Swiss Prot

P01024

### Immunogen

A synthetic peptide corresponding to a sequence within amino acids 1200-1300 of human Complement Complement C3 (P01024).

### Synonyms

ASP; C3a; C3b; AHUS5; ARMD9; CPAMD1; HEL-S-62p; Complement C3

## Contact

☎ | 400-999-6126

✉ | [cn.market@abclonal.com.cn](mailto:cn.market@abclonal.com.cn)

🌐 | [www.abclonal.com.cn](http://www.abclonal.com.cn)

## Product Information

### Source

Rabbit

### Isotype

IgG

### Purification

Affinity purification

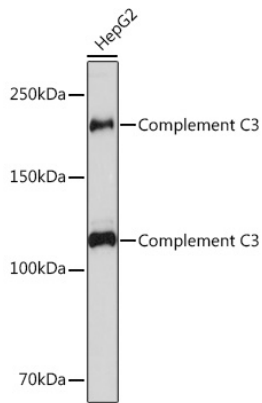
### Storage

Store at -20°C. Avoid freeze / thaw cycles.

Buffer: PBS with 0.02% sodium azide,0.05% BSA,50% glycerol,pH7.3.

## Validation Data

---



Western blot analysis of lysates from HepG2 cells, using Complement Complement C3 Rabbit mAb (A11196) at 1:1000 dilution.  
Secondary antibody: HRP-conjugated Goat anti-Rabbit IgG (H+L) (AS014) at 1:10000 dilution.  
Lysates/proteins: 25µg per lane.  
Blocking buffer: 3% nonfat dry milk in TBST.  
Detection: ECL Basic Kit (RM00020).  
Exposure time: 60s.