

[KO Validated] SQSTM1/p62 Rabbit pAb

Catalog No.: A11250 **KO Validated** **12 Publications**

Basic Information

Observed MW

62kDa/

Calculated MW

48kDa

Category

Primary antibody

Applications

WB,IHC-P,IF/ICC,IP,ELISA

Cross-Reactivity

Human,Rat

Background

This gene encodes a multifunctional protein that binds ubiquitin and regulates activation of the nuclear factor kappa-B (NF-κB) signaling pathway. The protein functions as a scaffolding/adaptor protein in concert with TNF receptor-associated factor 6 to mediate activation of NF-κB in response to upstream signals. Alternatively spliced transcript variants encoding either the same or different isoforms have been identified for this gene. Mutations in this gene result in sporadic and familial Paget disease of bone.

Recommended Dilutions

WB	1:500 - 1:2000
IHC-P	1:20 - 1:50
IF/ICC	1:20 - 1:50
IP	0.5μg-4μg antibody for 200μg-400μg extracts of whole cells
ELISA	Recommended starting concentration is 1 μg/mL. Please optimize the concentration based on your specific assay requirements.

Contact

☎ | 400-999-6126

✉ | cn.market@abclonal.com.cn

🌐 | www.abclonal.com.cn

Immunogen Information

Gene ID

8878

Swiss Prot

Q13501

Immunogen

Recombinant fusion protein containing a sequence corresponding to amino acids 1-440 of human SQSTM1/p62 (NP_003891.1).

Synonyms

p60; p62; A170; DMRV; OSIL; PDB3; ZIP3; p62B; NADGP; FTDALS3; 62

Product Information

Source

Rabbit

Isotype

IgG

Purification

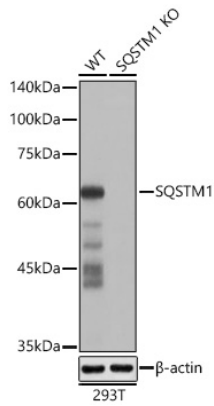
Affinity purification

Storage

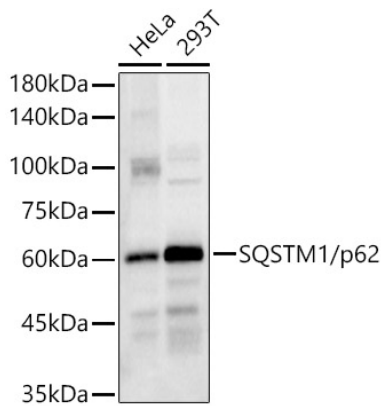
Store at -20°C. Avoid freeze / thaw cycles.

Buffer: PBS with 0.05% proclin300,50% glycerol,pH7.3.

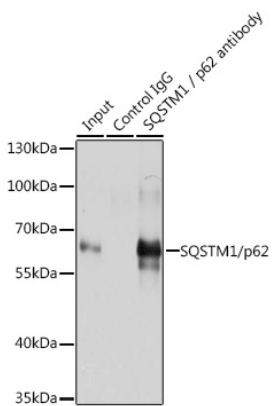
Validation Data



Western blot analysis of lysates from wild type (WT) and SQSTM1 knockout (KO) 293T cells using [KO Validated] SQSTM1/p62 Rabbit pAb (A11250) at 1:1000 dilution incubated overnight at 4°C. Secondary antibody: HRP-conjugated Goat anti-Rabbit IgG (H+L) (AS014) at 1:10000 dilution. Lysates/proteins: 25 μ g per lane. Blocking buffer: 3% nonfat dry milk in TBST. Detection: ECL Basic Kit (RM00020). Exposure time: 10s.

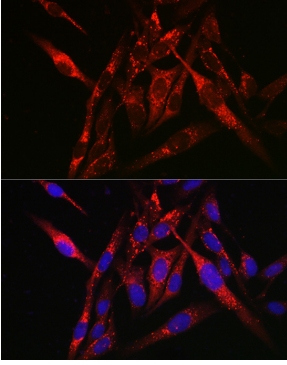


Western blot analysis of various lysates using [KO Validated] SQSTM1/p62 Rabbit pAb (A11250) at 1:1000 dilution. Secondary antibody: HRP-conjugated Goat anti-Rabbit IgG (H+L) (AS014) at 1:10000 dilution. Lysates/proteins: 25 μ g per lane. Blocking buffer: 3% nonfat dry milk in TBST. Detection: ECL Basic Kit (RM00020). Exposure time: 10s.

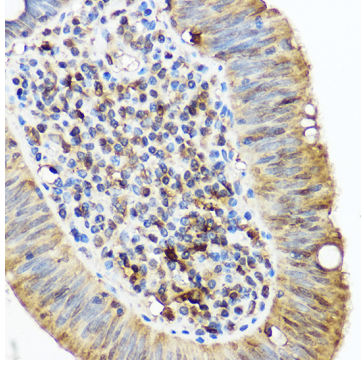


Immunoprecipitation analysis of 200 μ g extracts of C6 cells using 3 μ g SQSTM1/p62 antibody (A11250). Western blot was performed from the immunoprecipitate using SQSTM1/p62 antibody (A11250) at a dilution of 1:1000.

Validation Data



Immunofluorescence analysis of U2OS cells using [KO Validated] SQSTM1/p62 Rabbit pAb (A11250) at dilution of 1:50 (40x lens). Secondary antibody: Cy3-conjugated Goat anti-Rabbit IgG (H+L) (AS007) at 1:500 dilution. Blue: DAPI for nuclear staining.



Immunohistochemistry analysis of paraffin-embedded Human colon carcinoma using [KO Validated] SQSTM1/p62 Rabbit pAb (A11250) at dilution of 1:50 (40x lens). High pressure antigen retrieval performed with 0.01M Citrate Bufferr (pH 6.0) prior to IHC staining.