

HLA-DQA1 Rabbit mAb

Catalog No.: A11252 **Recombinant**

Basic Information

Observed MW

28kDa

Calculated MW

28kDa

Category

Primary antibody

Applications

ELISA,WB,IHC-P

Cross-Reactivity

Human, Mouse, Rat

CloneNo number

ARC0564

Background

HLA-DQA1 belongs to the HLA class II alpha chain paralogues. The class II molecule is a heterodimer consisting of an alpha (DQA) and a beta chain (DQB), both anchored in the membrane. It plays a central role in the immune system by presenting peptides derived from extracellular proteins. Class II molecules are expressed in antigen presenting cells (APC: B Lymphocytes, dendritic cells, macrophages). The alpha chain is approximately 33-35 kDa. It is encoded by 5 exons; exon 1 encodes the leader peptide, exons 2 and 3 encode the two extracellular domains, and exon 4 encodes the transmembrane domain and the cytoplasmic tail. Within the DQ molecule both the alpha chain and the beta chain contain the polymorphisms specifying the peptide binding specificities, resulting in up to four different molecules. Typing for these polymorphisms is routinely done for bone marrow transplantation.

Recommended Dilutions

WB	1:500 - 1:2000
IHC-P	1:50 - 1:200

Immunogen Information

Gene ID

3117

Swiss Prot

P01909

Immunogen

A synthetic peptide corresponding to a sequence within amino acids 155-254 of human HLA-DQA1 (P01909).

Synonyms

DQA1; DQ-A1; CELIAC1; HLA-DQA; HLA-DQB1; HLA-DQA1; HLA-DQA1

Contact

 | 400-999-6126

 | cn.market@abclonal.com.cn

 | www.abclonal.com.cn

Product Information

Source

Rabbit

Isotype

IgG

Purification

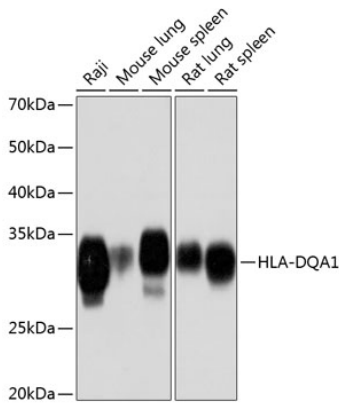
Affinity purification

Storage

Store at -20°C. Avoid freeze / thaw cycles.

Buffer: PBS with 0.02% sodium azide,0.05% BSA,50% glycerol,pH7.3.

Validation Data



Western blot analysis of extracts of various cell lines, using HLA-DQA1 Rabbit mAb (A11252) at 1:1000 dilution.

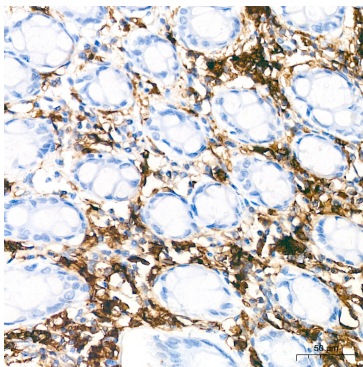
Secondary antibody: HRP Goat Anti-Rabbit IgG (H+L) (AS014) at 1:10000 dilution.

Lysates/proteins: 25µg per lane.

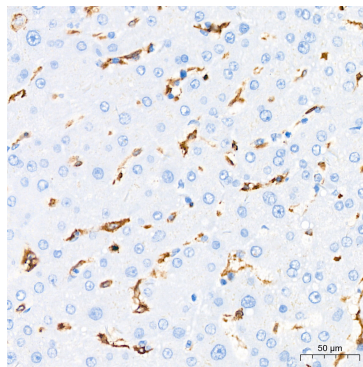
Blocking buffer: 3% nonfat dry milk in TBST.

Detection: ECL Basic Kit (RM00020).

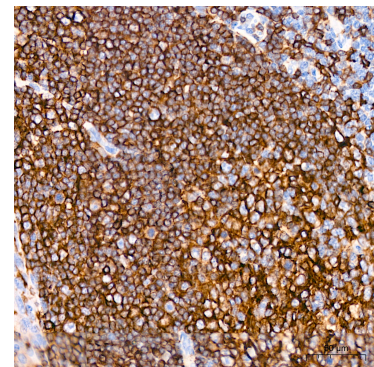
Exposure time: 10s.



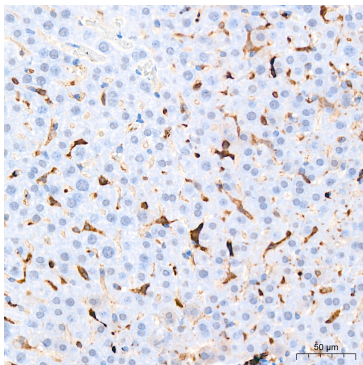
Immunohistochemistry analysis of HLA-DQA1 in paraffin-embedded human colon tissue using HLA-DQA1 Rabbit mAb (A11252) at a dilution of 1:200 (40x lens). High pressure antigen retrieval was performed with 0.01 M citrate buffer (pH 6.0) prior to IHC staining.



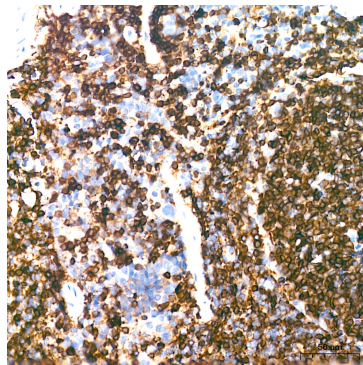
Immunohistochemistry analysis of HLA-DQA1 in paraffin-embedded human liver tissue using HLA-DQA1 Rabbit mAb (A11252) at a dilution of 1:200 (40x lens). High pressure antigen retrieval was performed with 0.01 M citrate buffer (pH 6.0) prior to IHC staining.



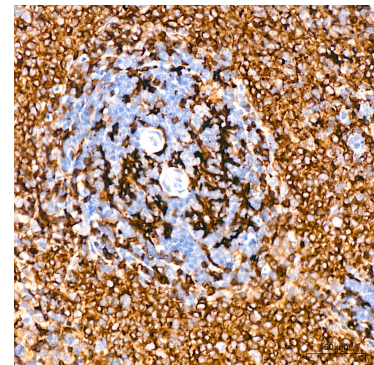
Immunohistochemistry analysis of HLA-DQA1 in paraffin-embedded human tonsil tissue using HLA-DQA1 Rabbit mAb (A11252) at a dilution of 1:200 (40x lens). High pressure antigen retrieval was performed with 0.01 M citrate buffer (pH 6.0) prior to IHC staining.



Immunohistochemistry analysis of HLA-DQA1 in paraffin-embedded mouse liver tissue using HLA-DQA1 Rabbit mAb (A11252) at a dilution of 1:200 (40x lens). High pressure antigen retrieval was performed with 0.01 M citrate buffer (pH 6.0) prior to IHC staining.



Immunohistochemistry analysis of HLA-DQA1 in paraffin-embedded mouse spleen tissue using HLA-DQA1 Rabbit mAb (A11252) at a dilution of 1:200 (40x lens). High pressure antigen retrieval was performed with 0.01 M citrate buffer (pH 6.0) prior to IHC staining.



Immunohistochemistry analysis of HLA-DQA1 in paraffin-embedded rat spleen tissue using HLA-DQA1 Rabbit mAb (A11252) at a dilution of 1:200 (40x lens). High pressure antigen retrieval was performed with 0.01 M citrate buffer (pH 6.0) prior to IHC staining.