

HDAC6 Rabbit pAb

Catalog No.: A11259 **9 Publications**

Basic Information

Observed MW

160kDa

Calculated MW

131kDa

Category

Primary antibody

Applications

WB,IHC-P,IF/ICC,IP,ELISA

Cross-Reactivity

Human, Mouse, Rat

Background

Histones play a critical role in transcriptional regulation, cell cycle progression, and developmental events. Histone acetylation/deacetylation alters chromosome structure and affects transcription factor access to DNA. The protein encoded by this gene belongs to class II of the histone deacetylase/acuc/alpha family. It contains an internal duplication of two catalytic domains which appear to function independently of each other. This protein possesses histone deacetylase activity and represses transcription.

Recommended Dilutions

WB 1:500 - 1:1000

IHC-P 1:100 - 1:500

IF/ICC 1:50 - 1:200

IP 0.5µg-4µg antibody for
200µg-400µg extracts of
whole cells

ELISA Recommended starting
concentration is 1 µg/mL.
Please optimize the
concentration based on
your specific assay
requirements.

Immunogen Information

Gene ID

10013

Swiss Prot

Q9UBN7

Immunogen

Recombinant fusion protein containing a sequence corresponding to amino acids 836-1104 of human HDAC6 (NP_006035.2).

Synonyms

HD6; JM21; CPBHM; PPP1R90; HDAC6

Product Information

Source

Rabbit

Isotype

IgG

Purification

Affinity purification

Storage

Store at -20°C. Avoid freeze / thaw cycles.

Buffer: PBS with 0.02% sodium azide,50% glycerol,pH7.3.

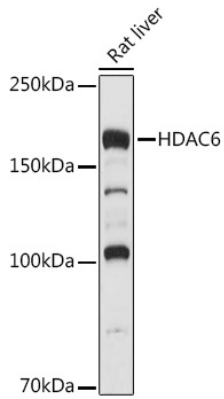
Contact

☎ | 400-999-6126

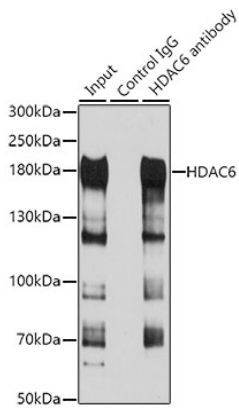
✉ | cn.market@abclonal.com.cn

🌐 | www.abclonal.com.cn

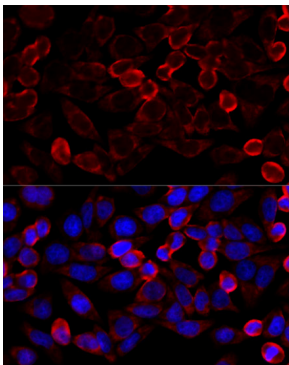
Validation Data



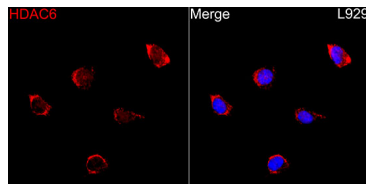
Western blot analysis of lysates from Rat liver, using HDAC6 Rabbit pAb (A11259) at 1:500 dilution. Secondary antibody: HRP-conjugated Goat anti-Rabbit IgG (H+L) (AS014) at 1:10000 dilution. Lysates/proteins: 25µg per lane. Blocking buffer: 3% nonfat dry milk in TBST. Detection: ECL Basic Kit (RM00020). Exposure time: 1s.



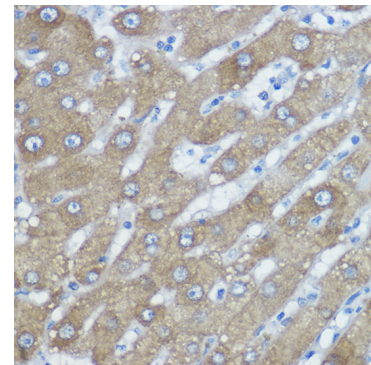
Immunoprecipitation analysis of 100 µg extracts of HepG2 cells using 3 µg HDAC6 antibody (A11259). Western blot was performed from the immunoprecipitate using HDAC6 antibody (A11259) at a dilution of 1:1000.



Immunofluorescence analysis of HeLa cells using HDAC6 Rabbit pAb (A11259) at dilution of 1:100 (40x lens). Secondary antibody: Cy3-conjugated Goat anti-Rabbit IgG (H+L) (AS007) at 1:500 dilution. Blue: DAPI for nuclear staining.



Immunofluorescence analysis of L929 cells using HDAC6 Rabbit pAb(A11259) at a dilution of 1:100 (40x lens). Secondary antibody: Cy3-conjugated Goat anti-Rabbit IgG (H+L) (AS007) at 1:500 dilution. Blue: DAPI for nuclear staining.



Immunohistochemistry analysis of paraffin-embedded Human liver using HDAC6 Rabbit pAb (A11259) at dilution of 1:400 (40x lens). High pressure antigen retrieval performed with 0.01M Citrate Bufferr (pH 6.0) prior to IHC staining.