

HDAC6 Rabbit pAb

Catalog No.: A11259SP **12 Publications**

Basic Information

Observed MW

140 kDa

Calculated MW

131 kDa/114 kDa/126 kDa

Category

Primary antibody

Applications

WB,IF/ICC,IHC-P,ELISA

Cross-Reactivity

Human, Mouse, Rat

Background

Histones play a critical role in transcriptional regulation, cell cycle progression, and developmental events. Histone acetylation/deacetylation alters chromosome structure and affects transcription factor access to DNA. The protein encoded by this gene belongs to class II of the histone deacetylase/acuc/alpha family. It contains an internal duplication of two catalytic domains which appear to function independently of each other. This protein possesses histone deacetylase activity and represses transcription.

Recommended Dilutions

WB 1:2000 - 1:5000

IF/ICC 1:100 - 1:300

IHC-P 1:200 - 1:800

ELISA Recommended starting concentration is 1 µg/mL. Please optimize the concentration based on your specific assay requirements. For high-ratio antibody dilutions (≥1:10000) a sequential dilution method is strongly recommended to ensure measurement accuracy.

Immunogen Information

Gene ID

10013/15185

Swiss Prot

Q9UBN7/Q9Z2V5

Immunogen

This information is considered to be commercially sensitive.

Synonyms

HD6; JM21; CPBHM; PPP1R90; HDAC6

Product Information

Source

Rabbit

Isotype

IgG

Purification

Affinity purification

Storage

Store at -20°C. Avoid freeze / thaw cycles.

Buffer: PBS, pH 7.3, containing 50% glycerol. Preserved with Proclin300 or sodium azide.

May contain 0.05% BSA as specified on the Certificate of Analysis.

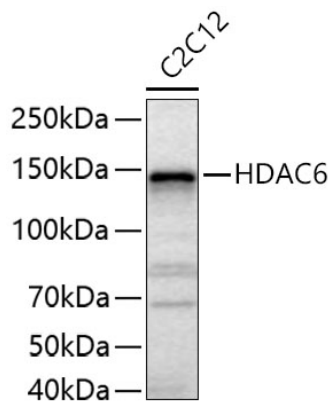
Contact

 | 400-999-6126

 | cn.market@abclonal.com.cn

 | www.abclonal.com.cn

Validation Data



Western blot analysis of lysates from C2C12 cells using HDAC6 Rabbit pAb (A11259SP) at 1:3000 dilution incubated overnight at 4°C.

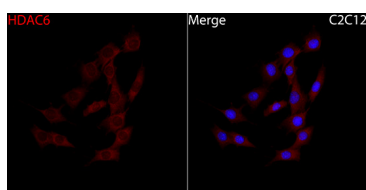
Secondary antibody: HRP-conjugated Goat anti-Rabbit IgG (H+L) (AS014) at 1:10000 dilution.

Lysates/proteins: 25 µg per lane.

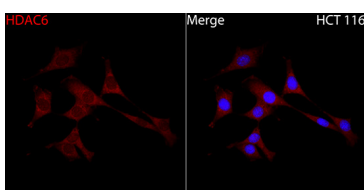
Blocking buffer: 3% nonfat dry milk in TBST.

Detection: ECL Basic Kit (RM00020).

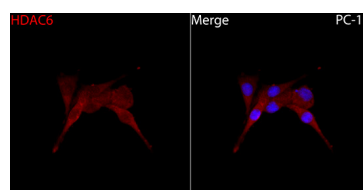
Exposure time: 5 s.



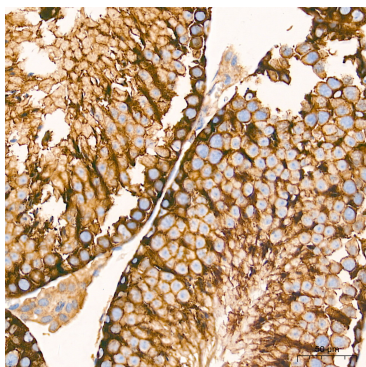
Immunofluorescence analysis of C2C12 cells using HDAC6 Rabbit pAb (A11259SP) at a dilution of 1:100 (40x lens). Secondary antibody: Cy3-conjugated Goat anti-Rabbit IgG (H+L) (AS007) at 1:500 dilution. Blue: DAPI for nuclear staining.



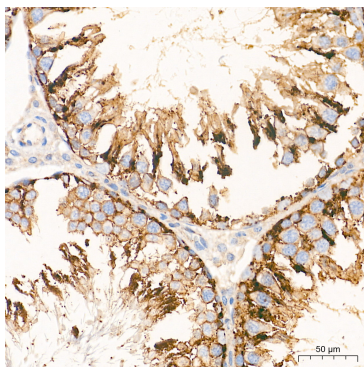
Immunofluorescence analysis of HCT116 cells using HDAC6 Rabbit pAb (A11259SP) at a dilution of 1:100 (40x lens). Secondary antibody: Cy3-conjugated Goat anti-Rabbit IgG (H+L) (AS007) at 1:500 dilution. Blue: DAPI for nuclear staining.



Immunofluorescence analysis of PC-12 cells using HDAC6 Rabbit pAb (A11259SP) at a dilution of 1:100 (40x lens). Secondary antibody: Cy3-conjugated Goat anti-Rabbit IgG (H+L) (AS007) at 1:500 dilution. Blue: DAPI for nuclear staining.



Immunohistochemistry analysis of paraffin-embedded Mouse testis tissue using HDAC6 Rabbit pAb (A11259SP) at a dilution of 1:700 (40x lens). High pressure antigen retrieval performed with 0.01M Tris-EDTA Buffer (pH 9.0) prior to IHC staining.



Immunohistochemistry analysis of paraffin-embedded Rat testis tissue using HDAC6 Rabbit pAb (A11259SP) at a dilution of 1:700 (40x lens). High pressure antigen retrieval performed with 0.01M Tris-EDTA Buffer (pH 9.0) prior to IHC staining.