

Cardiac troponin T (TNNT2) Rabbit pAb

Catalog No.: A1126

4 Publications

Basic Information

Observed MW

40 kDa

Calculated MW

31-36 kDa

Category

Primary antibody

Applications

WB,IF-P,IHC-P,ELISA

Cross-Reactivity

Mouse, Rat

Background

This gene encodes the cardiac isoform of troponin T. The encoded protein is the tropomyosin-binding subunit of the troponin complex, which is located on the thin filament of striated muscles and regulates muscle contraction in response to alterations in intracellular calcium ion concentration. Mutations in this gene have been associated with familial hypertrophic cardiomyopathy as well as with dilated cardiomyopathy.

Recommended Dilutions

WB	1:1000 - 1:5000
IF-P	1:50 - 1:200
IHC-P	1:100 - 1:200
ELISA	Recommended starting concentration is 1 µg/mL. Please optimize the concentration based on your specific assay requirements.

Immunogen Information

Gene ID

7139

Swiss Prot

P45379

Immunogen

Recombinant protein (or fragment). This information is considered to be commercially sensitive.

Synonyms

CMH2; RCM3; TnTC; cTnT; CMD1D; CMPD2; LVNC6; Cardiac troponin T (TNNT2)

Contact

☎	400-999-6126
✉	cn.market@abclonal.com.cn
🌐	www.abclonal.com.cn

Product Information

Source

Rabbit

Isotype

IgG

Purification

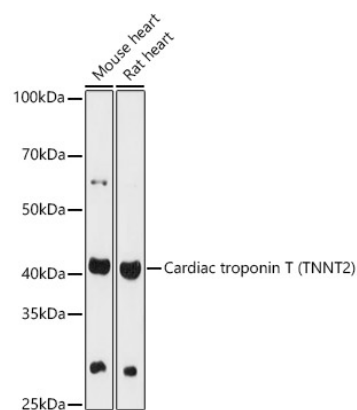
Affinity purification

Storage

Store at -20°C. Avoid freeze / thaw cycles.

Buffer: PBS containing 50% glycerol, preserved with proclin300 or sodium azide (as specified on the Certificate of Analysis), pH 7.3.

Validation Data



Western blot analysis of various lysates using Cardiac troponin T (TNNT2) Rabbit pAb (A1126) at 1:1000 dilution.

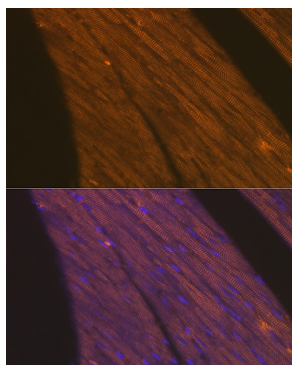
Secondary antibody: HRP-conjugated Goat anti-Rabbit IgG (H+L) (AS014) at 1:10000 dilution.

Lysates/proteins: 25µg per lane.

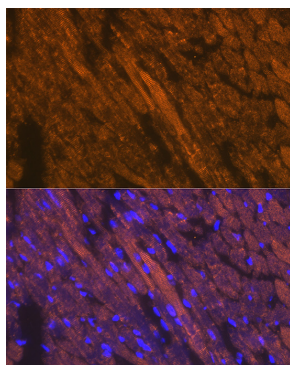
Blocking buffer: 3% nonfat dry milk in TBST.

Detection: ECL Basic Kit (RM00020).

Exposure time: 90s.



Immunofluorescence analysis of paraffin-embedded rat heart using Cardiac troponin T (TNNT2) Rabbit pAb (A1126) at dilution of 1:100 (40x lens). Secondary antibody: Cy3-conjugated Goat anti-Rabbit IgG (H+L) (AS007) at 1:500 dilution. Blue: DAPI for nuclear staining.



Immunofluorescence analysis of paraffin-embedded mouse heart using Cardiac troponin T (TNNT2) Rabbit pAb (A1126) at dilution of 1:100 (40x lens). Secondary antibody: Cy3-conjugated Goat anti-Rabbit IgG (H+L) (AS007) at 1:500 dilution. Blue: DAPI for nuclear staining.