

# ASH2L Rabbit mAb

Catalog No.: A11278 **Recombinant**

## Basic Information

### Observed MW

69kDa

### Calculated MW

69kDa

### Category

Primary antibody

### Applications

ELISA, WB, IHC-P, IF/ICC

### Cross-Reactivity

Human, Mouse, Rat

## Background

Enables beta-catenin binding activity and transcription cis-regulatory region binding activity. Contributes to histone methyltransferase activity (H3-K4 specific). Involved in histone H3-K4 methylation; positive regulation of cell population proliferation; and response to estrogen. Acts upstream of or within cellular response to DNA damage stimulus. Located in nucleus. Part of MLL3/4 complex and Set1C/COMPASS complex.

## Recommended Dilutions

<b>WB</b>	1:500 - 1:2000
<b>IHC-P</b>	1:50 - 1:200
<b>IF/ICC</b>	1:50 - 1:200

## Immunogen Information

<b>Gene ID</b>	<b>Swiss Prot</b>
9070	Q9UBL3

### Immunogen

Recombinant protein of human ASH2L

### Synonyms

ASH2; Bre2; ASH2L1; ASH2L2

## Contact

	400-999-6126
	<a href="mailto:cn.market@abclonal.com.cn">cn.market@abclonal.com.cn</a>
	<a href="http://www.abclonal.com.cn">www.abclonal.com.cn</a>

## Product Information

<b>Source</b>	<b>Isotype</b>	<b>Purification</b>
Rabbit	IgG	Affinity purification

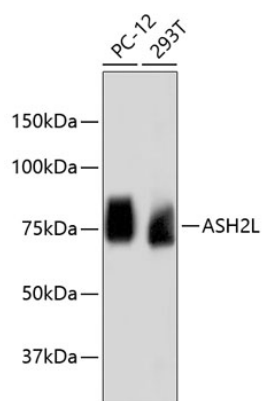
### Storage

Store at -20°C. Avoid freeze / thaw cycles.

Buffer: PBS with 0.02% sodium azide, 50% glycerol, pH7.3.

## Validation Data

---



Western blot analysis of extracts of various cell lines, using ASH2L antibody (A11278).  
Secondary antibody: HRP Goat Anti-Rabbit IgG (H+L) (AS014) at 1:10000 dilution.  
Lysates/proteins: 25µg per lane.  
Blocking buffer: 3% nonfat dry milk in TBST.