

Dot1L/KMT4 Rabbit pAb

Catalog No.: A11285 **2 Publications**

Basic Information

Observed MW

185kDa

Calculated MW

165kDa

Category

Primary antibody

Applications

ELISA, WB

Cross-Reactivity

Rat, Mouse

Background

The protein encoded by this gene is a histone methyltransferase that methylates lysine-79 of histone H3. It is inactive against free core histones, but shows significant histone methyltransferase activity against nucleosomes.

Recommended Dilutions

WB 1:100 - 1:500

Immunogen Information

Gene ID

84444

Swiss Prot

Q8TEK3

Immunogen

Recombinant fusion protein containing a sequence corresponding to amino acids 1-250 of human Dot1L/KMT4 (NP_115871.1).

Synonyms

DOT1; KMT4; Dot1L/KMT4

Contact

☎ | 400-999-6126

✉ | cn.market@abclonal.com.cn

🌐 | www.abclonal.com.cn

Product Information

Source

Rabbit

Isotype

IgG

Purification

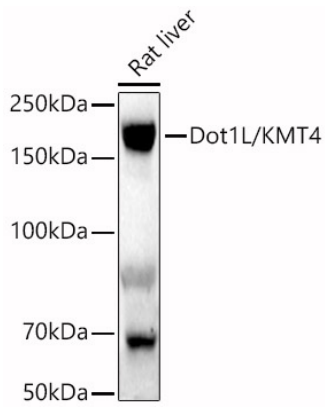
Affinity purification

Storage

Store at -20°C. Avoid freeze / thaw cycles.

Buffer: PBS with 0.02% sodium azide, 50% glycerol, pH7.3.

Validation Data



Western blot analysis of lysates from Rat liver, using Dot1L/KMT4 Rabbit pAb (A11285) at 1:400 dilution.
Secondary antibody: HRP Goat Anti-Rabbit IgG (H+L) (AS014) at 1:10000 dilution.
Lysates/proteins: 25µg per lane.
Blocking buffer: 3% nonfat dry milk in TBST.
Detection: ECL Enhanced Kit (RM00021).
Exposure time: 180s.