

MCM7 Rabbit mAb

Catalog No.: A11325 **Recombinant** **1 Publications**

Basic Information

Observed MW

81kDa

Calculated MW

81kDa

Category

Primary antibody

Applications

ELISA,WB,IF/ICC,IP

Cross-Reactivity

Human

CloneNo number

ARC0573

Background

The protein encoded by this gene is one of the highly conserved mini-chromosome maintenance proteins (MCM) that are essential for the initiation of eukaryotic genome replication. The hexameric protein complex formed by the MCM proteins is a key component of the pre-replication complex (pre_RC) and may be involved in the formation of replication forks and in the recruitment of other DNA replication related proteins. The MCM complex consisting of this protein and MCM2, 4 and 6 proteins possesses DNA helicase activity, and may act as a DNA unwinding enzyme. Cyclin D1-dependent kinase, CDK4, is found to associate with this protein, and may regulate the binding of this protein with the tumorsuppressor protein RB1/RB. Alternatively spliced transcript variants encoding distinct isoforms have been reported.

Recommended Dilutions

WB 1:500 - 1:1000**IF/ICC** 1:50 - 1:200**IP** 0.5µg-4µg antibody for
200µg-400µg extracts of
whole cells

Immunogen Information

Gene ID

4176

Swiss Prot

P33993

Immunogen

A synthetic peptide corresponding to a sequence within amino acids 600-700 of human MCM7 (P33993).

Synonyms

MCM2; CDC47; P85MCM; P1CDC47; PNAS146; PPP1R104; P1.1-MCM3; MCM7

Contact

 | 400-999-6126 | cn.market@abclonal.com.cn | www.abclonal.com.cn

Product Information

Source

Rabbit

Isotype

IgG

Purification

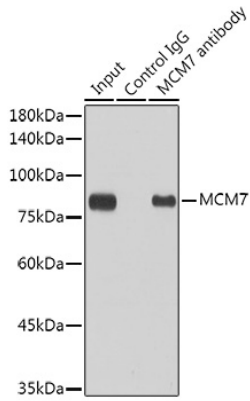
Affinity purification

Storage

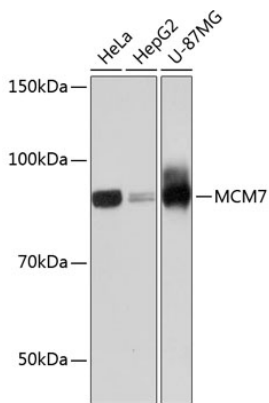
Store at -20°C. Avoid freeze / thaw cycles.

Buffer: PBS with 0.02% sodium azide,0.05% BSA,50% glycerol,pH7.3.

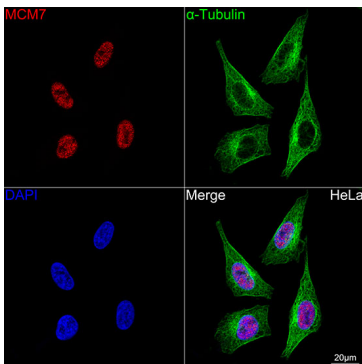
Validation Data



Immunoprecipitation analysis of 300 μ g extracts of HeLa cells using 3 μ g MCM7 antibody (A11325). Western blot was performed from the immunoprecipitate using MCM7 antibody (A11325) at a dilution of 1:1000.



Western blot analysis of various lysates using MCM7 Rabbit mAb (A11325) at 1:1000 dilution. Secondary antibody: HRP Goat Anti-Rabbit IgG (H+L) (AS014) at 1:10000 dilution. Lysates/proteins: 25 μ g per lane. Blocking buffer: 3% nonfat dry milk in TBST. Detection: ECL Basic Kit (RM00020). Exposure time: 60s.



Confocal imaging of HeLa cells using MCM7 Rabbit mAb (A11325, at dilution of 1:100) (Red). The cells were counterstained with α -Tubulin Mouse mAb (AC012, dilution 1:400) (Green). DAPI was used for nuclear staining (blue). Objective: 100x.