

CDC25C Rabbit pAb

Catalog No.: A11328

Basic Information

Observed MW

Refer to figures

Calculated MW

53kDa

Category

Primary antibody

Applications

ELISA,IF/ICC

Cross-Reactivity

Human

Background

This gene encodes a conserved protein that plays a key role in the regulation of cell division. The encoded protein directs dephosphorylation of cyclin B-bound CDC2 and triggers entry into mitosis. It also suppresses p53-induced growth arrest. Multiple alternatively spliced transcript variants of this gene have been described.

Recommended Dilutions

IF/ICC 1:50 - 1:200

Immunogen Information

Gene ID

995

Swiss Prot

P30307

Immunogen

Recombinant fusion protein containing a sequence corresponding to amino acids 174-473 of human CDC25C (NP_001781.2).

Synonyms

CDC25; PPP1R60; CDC25C

Contact

☎ | 400-999-6126

✉ | cn.market@abclonal.com.cn

🌐 | www.abclonal.com.cn

Product Information

Source

Rabbit

Isotype

IgG

Purification

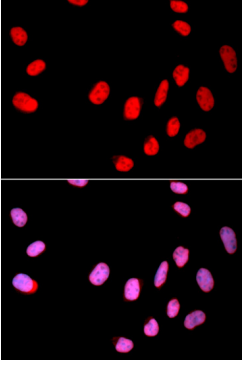
Affinity purification

Storage

Store at -20°C. Avoid freeze / thaw cycles.

Buffer: PBS with 0.02% sodium azide,50% glycerol,pH7.3.

Validation Data



Immunofluorescence analysis of U2OS cells using CDC25C antibody (A11328). Blue: DAPI for nuclear staining.