

DDIT3/CHOP Rabbit pAb

Catalog No.: A11346 **4 Publications**

Basic Information

Observed MW

30kDa

Calculated MW

19kDa

Category

Primary antibody

Applications

ELISA, WB, IHC-P, IP

Cross-Reactivity

Mouse, Rat

Background

This gene encodes a member of the CCAAT/enhancer-binding protein (C/EBP) family of transcription factors. The protein functions as a dominant-negative inhibitor by forming heterodimers with other C/EBP members, such as C/EBP and LAP (liver activator protein), and preventing their DNA binding activity. The protein is implicated in adipogenesis and erythropoiesis, is activated by endoplasmic reticulum stress, and promotes apoptosis. Fusion of this gene and FUS on chromosome 16 or EWSR1 on chromosome 22 induced by translocation generates chimeric proteins in myxoid liposarcomas or Ewing sarcoma. Multiple alternatively spliced transcript variants encoding two isoforms with different length have been identified.

Recommended Dilutions

WB 1:500 - 1:1000

IHC-P 1:50 - 1:200

IP 0.5µg-4µg antibody for
200µg-400µg extracts of
whole cells

Immunogen Information

Gene ID

1649

Swiss Prot

P35638

Immunogen

A synthetic peptide corresponding to a sequence within amino acids 1-100 of human DDIT3/CHOP (NP_004074.2).

Synonyms

CHOP; CEBPZ; CHOP10; CHOP-10; GADD153; AltDDIT3; C/EBPzeta; DDIT3/CHOP

Contact

 | 400-999-6126

 | cn.market@abclonal.com.cn

 | www.abclonal.com.cn

Product Information

Source

Rabbit

Isotype

IgG

Purification

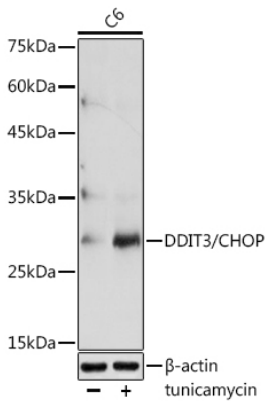
Affinity purification

Storage

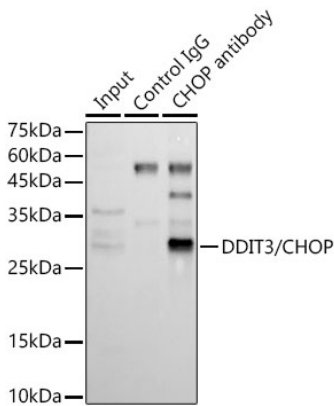
Store at -20°C. Avoid freeze / thaw cycles.

Buffer: PBS with 0.01% thimerosal, 50% glycerol, pH7.3.

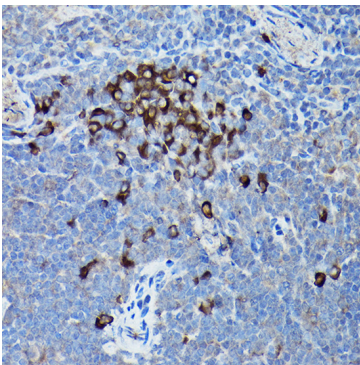
Validation Data



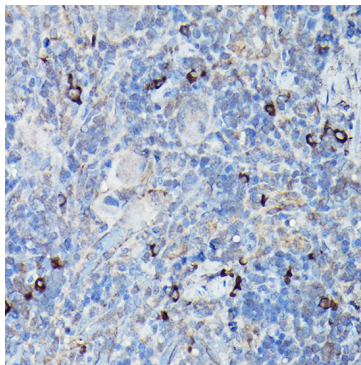
Western blot analysis of lysates from C6 cells, using DDIT3/CHOP Rabbit pAb (A11346) at 1:1000 dilution. C6 cells were treated by tunicamycin (2 µg/ml) for 8 hours.
Secondary antibody: HRP Goat Anti-Rabbit IgG (H+L) (AS014) at 1:10000 dilution.
Lysates/proteins: 25µg per lane.
Blocking buffer: 3% nonfat dry milk in TBST.
Detection: ECL Basic Kit (RM00020).
Exposure time: 90s.



Immunoprecipitation analysis of 300 µg extracts of C2C12 tunicamycin cells using 3 µg DDIT3/CHOP antibody (A11346). Western blot was performed from the immunoprecipitate using DDIT3/CHOP antibody (A11346) at a dilution of 1:500.



Immunohistochemistry analysis of paraffin-embedded Mouse spleen using DDIT3/CHOP Rabbit pAb (A11346) at dilution of 1:200 (40x lens). High pressure antigen retrieval performed with 0.01M Citrate Bufferr (pH 6.0) prior to IHC staining.



Immunohistochemistry analysis of paraffin-embedded Rat spleen using DDIT3/CHOP Rabbit pAb (A11346) at dilution of 1:200 (40x lens). High pressure antigen retrieval performed with 0.01M Citrate Bufferr (pH 6.0) prior to IHC staining.