

Vimentin Rabbit pAb

Catalog No.: A11423

4 Publications

Basic Information

Observed MW

57kDa

Calculated MW

54kDa

Category

Primary antibody

Applications

ELISA, WB, IHC-P

Cross-Reactivity

Human, Mouse, Rat

Background

This gene encodes a type III intermediate filament protein. Intermediate filaments, along with microtubules and actin microfilaments, make up the cytoskeleton. The encoded protein is responsible for maintaining cell shape and integrity of the cytoplasm, and stabilizing cytoskeletal interactions. This protein is involved in neuritogenesis and cholesterol transport and functions as an organizer of a number of other critical proteins involved in cell attachment, migration, and signaling. Bacterial and viral pathogens have been shown to attach to this protein on the host cell surface. Mutations in this gene are associated with congenital cataracts in human patients.

Recommended Dilutions

WB 1:500 - 1:1000

IHC-P 1:50 - 1:200

Immunogen Information

Gene ID

7431

Swiss Prot

P08670

Immunogen

A synthetic peptide corresponding to a sequence within amino acids 300-400 of human Vimentin (NP_003371.2).

Synonyms

CTRCT30; HEL113; Vimentin; VIM; vimentin

Contact

☎ | 400-999-6126

✉ | cn.market@abclonal.com.cn🌐 | www.abclonal.com.cn

Product Information

Source

Rabbit

Isotype

IgG

Purification

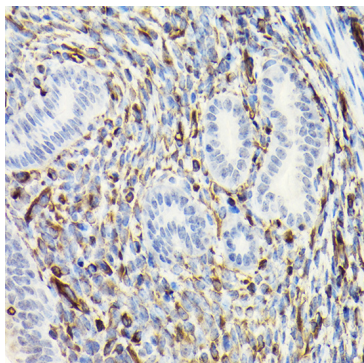
Affinity purification

Storage

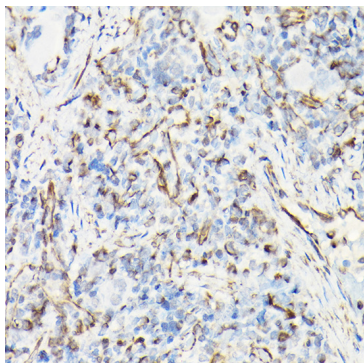
Store at -20°C. Avoid freeze / thaw cycles.

Buffer: PBS with 0.01% thimerosal, 50% glycerol, pH7.3.

Validation Data



Immunohistochemistry analysis of Vimentin in paraffin-embedded mouse uterus using Vimentin Rabbit pAb (A11423) at dilution of 1:100 (40x lens). Perform high pressure antigen retrieval with 10 mM citrate buffer pH 6.0 before commencing with IHC staining protocol.



Immunohistochemistry analysis of Vimentin in paraffin-embedded rat spleen using Vimentin Rabbit pAb (A11423) at dilution of 1:100 (40x lens). Perform high pressure antigen retrieval with 10 mM citrate buffer pH 6.0 before commencing with IHC staining protocol.