

LDHA Rabbit pAb

Catalog No.: A1146SP **43 Publications**

Basic Information

Observed MW

37 kDa

Calculated MW

27-40 kDa

Category

Primary antibody

Applications

WB,IF/ICC,ELISA

Cross-Reactivity

Human, Mouse, Rat

Background

The protein encoded by this gene catalyzes the conversion of L-lactate and NAD to pyruvate and NADH in the final step of anaerobic glycolysis. The protein is found predominantly in muscle tissue and belongs to the lactate dehydrogenase family. Mutations in this gene have been linked to exertional myoglobinuria. Multiple transcript variants encoding different isoforms have been found for this gene. The human genome contains several non-transcribed pseudogenes of this gene.

Recommended Dilutions

WB 1:2000 - 1:10000

IF/ICC 1:100 - 1:300

ELISA Recommended starting concentration is 1 µg/mL. Please optimize the concentration based on your specific assay requirements. For high-ratio antibody dilutions (≥1:10000) a sequential dilution method is strongly recommended to ensure measurement accuracy.

Immunogen Information

Gene ID

3939

Swiss Prot

P00338

Immunogen

This information is considered to be commercially sensitive.

Synonyms

LDHM; GSD11; PIG19; HEL-S-133P; LDHA

Product Information

Source

Rabbit

Isotype

IgG

Purification

Affinity purification

Storage

Store at -20°C. Avoid freeze / thaw cycles.

Buffer: PBS, pH 7.3, containing 50% glycerol. Preserved with Proclin300 or sodium azide.

May contain 0.05% BSA as specified on the Certificate of Analysis.

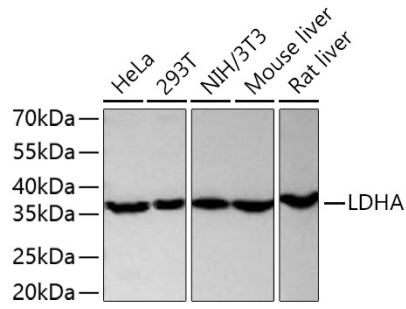
Contact

☎ | 400-999-6126

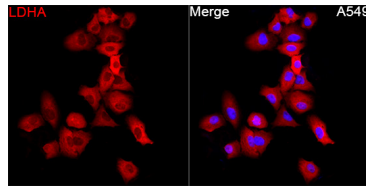
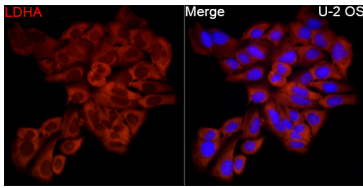
✉ | cn.market@abclonal.com.cn

🌐 | www.abclonal.com.cn

Validation Data



Western blot analysis of various lysates using LDHA Rabbit pAb (A1146SP) at 1:3000 dilution incubated at room temperature for 1.5 hours.
Secondary antibody: HRP-conjugated Goat anti-Rabbit IgG (H+L) (AS014) at 1:10000 dilution.
Lysates/proteins: 25 µg per lane.
Blocking buffer: 3% nonfat dry milk in TBST.
Detection: ECL Basic Kit (RM00020).
Exposure time: 20 s.



Immunofluorescence analysis of U-2 OS cells using LDHA Rabbit pAb (A1146SP) at a dilution of 1:150 (40x lens). Secondary antibody: Cy3-conjugated Goat anti-Rabbit IgG (H+L) (AS007) at 1:500 dilution. Blue: DAPI for nuclear staining.

Immunofluorescence analysis of A549 cells using LDHA Rabbit pAb (A1146SP) at a dilution of 1:150 (40x lens). Secondary antibody: Cy3-conjugated Goat anti-Rabbit IgG (H+L) (AS007) at 1:500 dilution. Blue: DAPI for nuclear staining.