

ATOH1 Rabbit mAb

Catalog No.: A11477 **Recombinant** **2 Publications**

Basic Information

Observed MW

45kDa

Calculated MW

38kDa

Category

Primary antibody

Applications

WB, ELISA

Cross-Reactivity

Human

CloneNo number

ARC0609

Background

Enables sequence-specific double-stranded DNA binding activity. Predicted to be involved in neuron differentiation; positive regulation of neuron differentiation; and regulation of transcription by RNA polymerase II. Predicted to act upstream of or within several processes, including generation of neurons; inner ear morphogenesis; and positive regulation of inner ear auditory receptor cell differentiation. Predicted to be part of chromatin. Predicted to be active in nucleus.

Recommended Dilutions

WB 1:500 - 1:1000

ELISA Recommended starting concentration is 1 µg/mL. Please optimize the concentration based on your specific assay requirements.

Immunogen Information

Gene ID

474

Swiss Prot

Q92858

Immunogen

Synthetic peptide. This information is considered to be commercially sensitive.

Synonyms

ATH1; HATH1; DFNA89; MATH-1; bHLHa14; ATOH1

Contact

☎ | 400-999-6126

✉ | cn.market@abclonal.com.cn

🌐 | www.abclonal.com.cn

Product Information

Source

Rabbit

Isotype

IgG

Purification

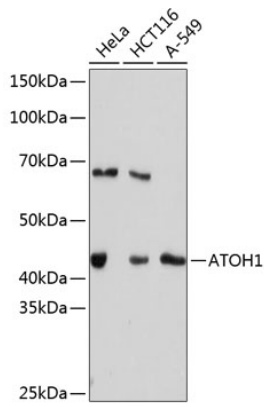
Affinity purification

Storage

Store at -20°C. Avoid freeze / thaw cycles.

Buffer: PBS containing 50% glycerol and 0.05% BSA, preserved with proclin300 or sodium azide (as specified on the Certificate of Analysis), pH 7.3.

Validation Data



Western blot analysis of various lysates using ATOH1 Rabbit mAb (A11477) at 1:1000 dilution.
Secondary antibody: HRP-conjugated Goat anti-Rabbit IgG (H+L) (AS014) at 1:10000 dilution.
Lysates/proteins: 25µg per lane.
Blocking buffer: 3% nonfat dry milk in TBST.
Detection: ECL Basic Kit (RM00020).
Exposure time: 3min.