

# p47phox/NCF1 Rabbit pAb

Catalog No.: A1148 **5 Publications**

## Basic Information

### Observed MW

47kDa/

### Calculated MW

45kDa

### Category

Primary antibody

### Applications

WB,IF/ICC,IP,ELISA

### Cross-Reactivity

Human, Mouse, Rat

## Background

The protein encoded by this gene is a 47 kDa cytosolic subunit of neutrophil NADPH oxidase. This oxidase is a multicomponent enzyme that is activated to produce superoxide anion. Mutations in this gene have been associated with chronic granulomatous disease.

## Recommended Dilutions

**WB** 1:500 - 1:1000

**IF/ICC** 1:50 - 1:100

**IP** 0.5µg-4µg antibody for  
200µg-400µg extracts of  
whole cells

**ELISA** Recommended starting  
concentration is 1 µg/mL.  
Please optimize the  
concentration based on  
your specific assay  
requirements.

## Immunogen Information

### Gene ID

653361

### Swiss Prot

P14598

### Immunogen

Recombinant fusion protein containing a sequence corresponding to amino acids 1-390 of human p47phox/NCF1 (NP\_000256.4).

### Synonyms

CGD1; NCF1A; NOXO2; p47phox; SH3PXD1A; p47phox/NCF1

## Contact

 | 400-999-6126

 | [cn.market@abclonal.com.cn](mailto:cn.market@abclonal.com.cn)

 | [www.abclonal.com.cn](http://www.abclonal.com.cn)

## Product Information

### Source

Rabbit

### Isotype

IgG

### Purification

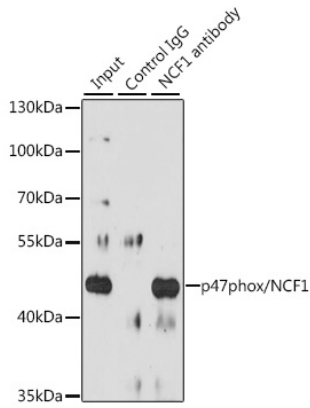
Affinity purification

### Storage

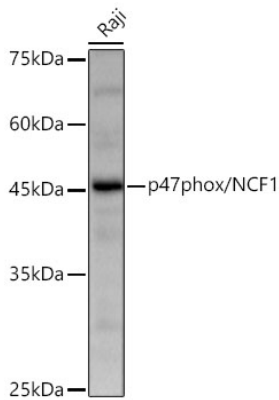
Store at -20°C. Avoid freeze / thaw cycles.

Buffer: PBS with 0.02% sodium azide,50% glycerol,pH7.3.

## Validation Data



Immunoprecipitation analysis of 200 µg extracts of Raji cells, using 3 µg p47phox/NCF1 antibody (A1148). Western blot was performed from the immunoprecipitate using p47phox/NCF1 antibody (A1148) at a dilution of 1:1000.



Western blot analysis of lysates from Raji cells using p47phox/NCF1 Rabbit pAb (A1148) at 1:1000 dilution.

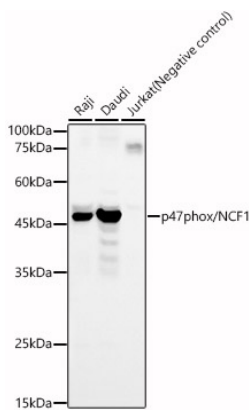
Secondary antibody: HRP-conjugated Goat anti-Rabbit IgG (H+L) (AS014) at 1:10000 dilution.

Lysates/proteins: 25 µg per lane.

Blocking buffer: 3% nonfat dry milk in TBST.

Detection: ECL Basic Kit (RM00020).

Exposure time: 10s.



Western blot analysis of various lysates, using p47phox/NCF1 Rabbit pAb (A1148) at 1:400 dilution.

Secondary antibody: HRP-conjugated Goat anti-Rabbit IgG (H+L) (AS014) at 1:10000 dilution.

Lysates/proteins: 25µg per lane.

Blocking buffer: 3% nonfat dry milk in TBST.

Detection: ECL Basic Kit (RM00020).

Exposure time: 180s.