

FGF2 Rabbit mAb

Catalog No.: A11488 **Recombinant** **3 Publications**

Basic Information

Observed MW

18kDa/22kDa/31kDa

Calculated MW

31kDa

Category

Primary antibody

Applications

ELISA, WB, IHC-P, IF/ICC

Cross-Reactivity

Human

CloneNo number

ARC0618

Background

The protein encoded by this gene is a member of the fibroblast growth factor (FGF) family. FGF family members bind heparin and possess broad mitogenic and angiogenic activities. This protein has been implicated in diverse biological processes, such as limb and nervous system development, wound healing, and tumor growth. The mRNA for this gene contains multiple polyadenylation sites, and is alternatively translated from non-AUG (CUG) and AUG initiation codons, resulting in five different isoforms with distinct properties. The CUG-initiated isoforms are localized in the nucleus and are responsible for the intracrine effect, whereas, the AUG-initiated form is mostly cytosolic and is responsible for the paracrine and autocrine effects of this FGF.

Recommended Dilutions

WB	1:500 - 1:2000
IHC-P	1:100 - 1:500
IF/ICC	1:50 - 1:200

Immunogen Information

Gene ID

2247

Swiss Prot

P09038


Immunogen

A synthetic peptide corresponding to a sequence within amino acids 100-200 of human FGF2 (NP_001997.5).

Synonyms

BFGF; FGFB; FGF-2; HBGF-2; F2

Contact

 | 400-999-6126

 | cn.market@abclonal.com.cn

 | www.abclonal.com.cn

Product Information

Source

Rabbit

Isotype

IgG

Purification

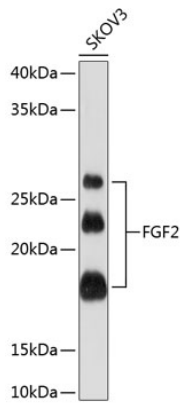
Affinity purification

Storage

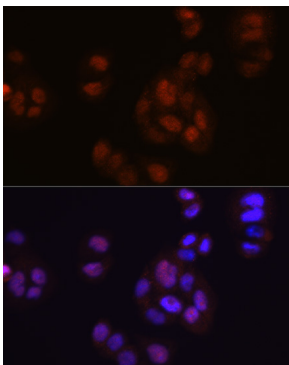
Store at -20°C. Avoid freeze / thaw cycles.

Buffer: PBS with 0.02% sodium azide, 0.05% BSA, 50% glycerol, pH7.3.

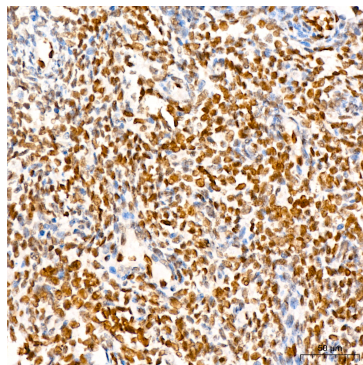
Validation Data



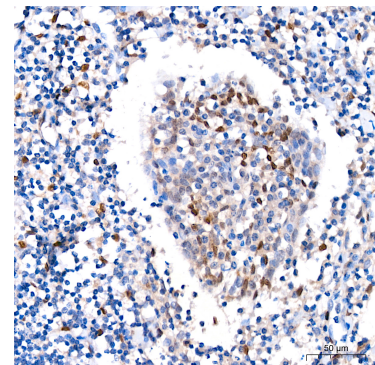
Western blot analysis of lysates from SKOV3 cells, using FGF2 Rabbit mAb (A11488) at 1:1000 dilution. Secondary antibody: HRP Goat Anti-Rabbit IgG (H+L) (AS014) at 1:10000 dilution. Lysates/proteins: 25µg per lane. Blocking buffer: 3% nonfat dry milk in TBST. Detection: ECL Basic Kit (RM00020). Exposure time: 60s.



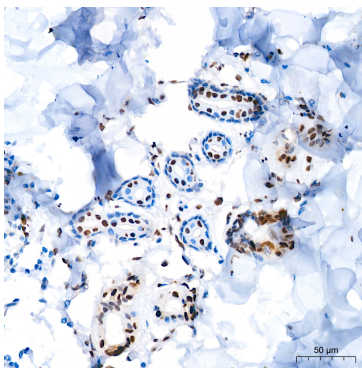
Immunofluorescence analysis of HeLa cells using FGF2 Rabbit mAb (A11488) at dilution of 1:100 (40x lens). Secondary antibody: Cy3 Goat Anti-Rabbit IgG (H+L) (AS007) at 1:500 dilution. Blue: DAPI for nuclear staining.



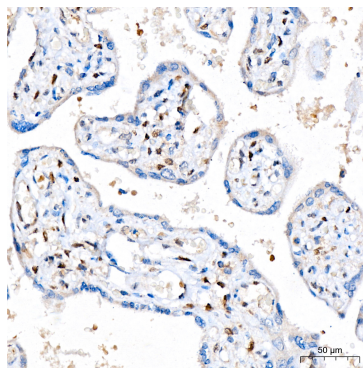
Immunohistochemistry analysis of FGF2 in paraffin-embedded human lung squamous carcinoma tissue using FGF2 Rabbit mAb (A11488) at dilution of 1:400 (40x lens). Perform high pressure antigen retrieval with 10 mM Tris/EDTA buffer pH 9.0 before commencing with IHC staining protocol.



Immunohistochemistry analysis of FGF2 in paraffin-embedded human tonsil tissue using FGF2 Rabbit mAb (A11488) at a dilution of 1:200 (40x lens). High pressure antigen retrieval was performed with 0.01 M citrate buffer (pH 6.0) prior to IHC staining.



Immunohistochemistry analysis of FGF2 in paraffin-embedded human skin tissue using FGF2 Rabbit mAb (A11488) at a dilution of 1:200 (40x lens). High pressure antigen retrieval was performed with 0.01 M citrate buffer (pH 6.0) prior to IHC staining.



Immunohistochemistry analysis of FGF2 in paraffin-embedded human placenta tissue using FGF2 Rabbit mAb (A11488) at a dilution of 1:200 (40x lens). High pressure antigen retrieval was performed with 0.01 M citrate buffer (pH 6.0) prior to IHC staining.