

CD41/ITGA2B Rabbit mAb

Catalog No.: A11490 **Recombinant** **2 Publications**

Basic Information

Observed MW

113-135 kDa

Calculated MW

113 kDa

Category

Primary antibody

Applications

WB, IHC-P, ELISA

Cross-Reactivity

Human

CloneNo number

ARC0620

Background

This gene encodes a member of the integrin alpha chain family of proteins. The encoded preproprotein is proteolytically processed to generate light and heavy chains that associate through disulfide linkages to form a subunit of the alpha-IIb/beta-3 integrin cell adhesion receptor. This receptor plays a crucial role in the blood coagulation system, by mediating platelet aggregation. Mutations in this gene are associated with platelet-type bleeding disorders, which are characterized by a failure of platelet aggregation, including Glanzmann thrombasthenia.

Recommended Dilutions

WB 1:2000 - 1:5000

IHC-P 1:100 - 1:800

ELISA Recommended starting concentration is 1 µg/mL. Please optimize the concentration based on your specific assay requirements.

Immunogen Information

Gene ID

3674

Swiss Prot

P08514

Immunogen

Synthetic peptide. This information is considered to be commercially sensitive.

Synonyms

GT; GT1; GTA; CD41; GP2B; HPA3; CD41B; GPIIb; BDPLT2; BDPLT16; PPP1R93; CD41/ITGA2B

Contact

☎ | 400-999-6126

✉ | cn.market@abclonal.com.cn

🌐 | www.abclonal.com.cn

Product Information

Source

Rabbit

Isotype

IgG

Purification

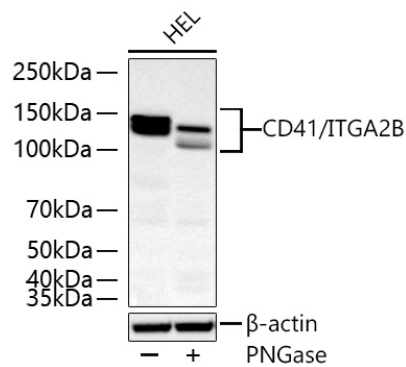
Affinity purification

Storage

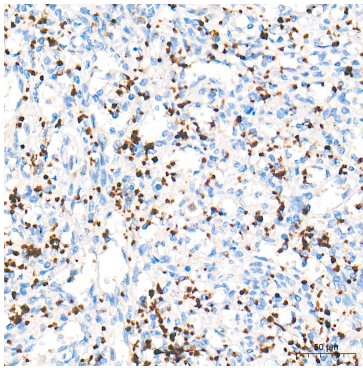
Store at -20°C. Avoid freeze / thaw cycles.

Buffer: PBS containing 50% glycerol and 0.05% BSA, preserved with proclin300 or sodium azide (as specified on the Certificate of Analysis), pH 7.3.

Validation Data



Western blot analysis of various lysates using CD41/ITGA2B Rabbit mAb (A11490) at 1:5000 dilution incubated overnight at 4°C. HEL cells treated with PNGase (2 μ L) at 37°C for 1 hours. Secondary antibody: HRP-conjugated Goat anti-Rabbit IgG (H+L) (AS014) at 1:10000 dilution. Lysates/proteins: 30 μ g per lane. Blocking buffer: 3% nonfat dry milk in TBST. Detection: ECL Basic Kit (RM00020). Exposure time: 90 s.



Immunohistochemistry analysis of paraffin-embedded Human spleen tissue using CD41/ITGA2B Rabbit mAb (A11490) at a dilution of 1:200 (40x lens). High pressure antigen retrieval performed with 0.01M Tris-EDTA Buffer (pH 9.0) prior to IHC staining.