

β-Catenin Rabbit pAb

Catalog No.: A11512 **10 Publications**

Basic Information

Observed MW

92kDa

Calculated MW

85kDa

Category

Primary antibody

Applications

ELISA, WB, IHC-P, IP

Cross-Reactivity

Human, Mouse, Rat

Background

The protein encoded by this gene is part of a complex of proteins that constitute adherens junctions (AJs). AJs are necessary for the creation and maintenance of epithelial cell layers by regulating cell growth and adhesion between cells. The encoded protein also anchors the actin cytoskeleton and may be responsible for transmitting the contact inhibition signal that causes cells to stop dividing once the epithelial sheet is complete. Finally, this protein binds to the product of the APC gene, which is mutated in adenomatous polyposis of the colon. Mutations in this gene are a cause of colorectal cancer (CRC), pilomatixoma (PTR), medulloblastoma (MDB), and ovarian cancer. Alternative splicing results in multiple transcript variants.

Recommended Dilutions

WB 1:100 - 1:500

IHC-P 1:20 - 1:200

IP 0.5μg-4μg antibody for
200μg-400μg extracts of
whole cells

Immunogen Information

Gene ID

1499

Swiss Prot

P35222

Immunogen

Recombinant fusion protein containing a sequence corresponding to amino acids 667-781 of human β-Catenin (NP_001895.1).

Synonyms

EVR7; CTNNB; MRD19; NEDSDV; armadillo; β-Catenin

Contact

 | 400-999-6126 | cn.market@abclonal.com.cn | www.abclonal.com.cn

Product Information

Source

Rabbit

Isotype

IgG

Purification

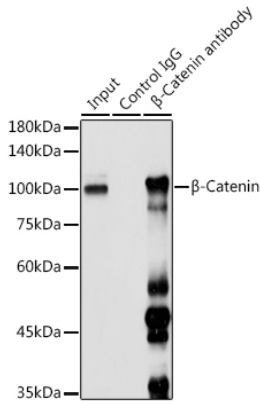
Affinity purification

Storage

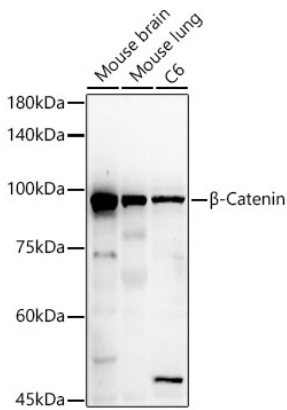
Store at -20°C. Avoid freeze / thaw cycles.

Buffer: PBS with 0.05% proclin300, 50% glycerol, pH7.3.

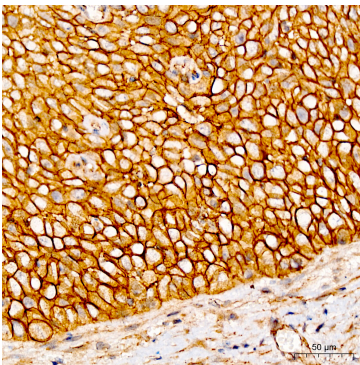
Validation Data



Immunoprecipitation analysis of 300 μ g extracts of 293T cells using 3 μ g β -Catenin antibody (A11512). Western blot was performed from the immunoprecipitate using β -Catenin antibody (A11512) at a dilution of 1:1000.



Western blot analysis of various lysates, using β -Catenin Rabbit pAb (A11512) at 1:500 dilution. Secondary antibody: HRP Goat Anti-Rabbit IgG (H+L) (AS014) at 1:10000 dilution. Lysates/proteins: 25 μ g per lane. Blocking buffer: 3% nonfat dry milk in TBST. Detection: ECL Enhanced Kit (RM00021). Exposure time: 90s.



Immunohistochemistry analysis of β -Catenin in paraffin-embedded human cervix cancer tissue using β -Catenin Rabbit pAb (A11512) at a dilution of 1:100 (40x lens). High pressure antigen retrieval was performed with 0.01 M Tris-EDTA buffer (pH 9.0) prior to IHC staining.