

# CD31/PECAM1 Rabbit pAb

Catalog No.: A11525 **7 Publications**

## Basic Information

### Observed MW

130kDa

### Calculated MW

83kDa

### Category

Primary antibody

### Applications

WB,ELISA

### Cross-Reactivity

Human, Mouse

## Background

The protein encoded by this gene is found on the surface of platelets, monocytes, neutrophils, and some types of T-cells, and makes up a large portion of endothelial cell intercellular junctions. The encoded protein is a member of the immunoglobulin superfamily and is likely involved in leukocyte migration, angiogenesis, and integrin activation.

## Recommended Dilutions

**WB** 1:500 - 1:2000

**ELISA** Recommended starting concentration is 1 µg/mL. Please optimize the concentration based on your specific assay requirements.

## Immunogen Information

### Gene ID

5175

### Swiss Prot

P16284

### Immunogen

A synthetic peptide corresponding to a sequence within amino acids 20-255 of human CD31/PECAM (NP\_000433.4).

### Synonyms

CD31; PECA1; GPIIA'; PECAM-1; endoCAM; CD31/EndoCAM; CD31/PECAM1

## Contact

 | 400-999-6126

 | [cn.market@abclonal.com.cn](mailto:cn.market@abclonal.com.cn)

 | [www.abclonal.com.cn](http://www.abclonal.com.cn)

## Product Information

### Source

Rabbit

### Isotype

IgG

### Purification

Affinity purification

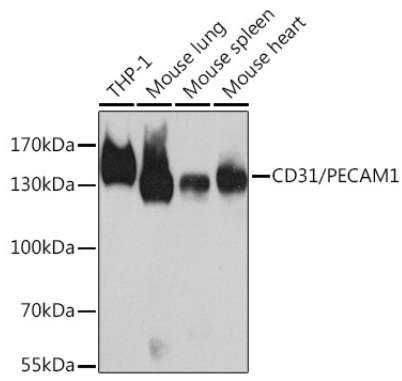
### Storage

Store at -20°C. Avoid freeze / thaw cycles.

Buffer: PBS with 0.09% Sodium azide,50% glycerol,pH7.3.

## Validation Data

---



Western blot analysis of various lysates using CD31/PECAM1 Rabbit pAb (A11525) at 1:1000 dilution.  
Secondary antibody: HRP-conjugated Goat anti-Rabbit IgG (H+L) (AS014) at 1:10000 dilution.  
Lysates/proteins: 25µg per lane.  
Blocking buffer: 3% nonfat dry milk in TBST.  
Detection: ECL Basic Kit (RM00020).  
Exposure time: 30s.