

# MAD1/MAD1L1 Rabbit pAb

Catalog No.: A1153

1 Publications

## Basic Information

### Observed MW

95kDa

### Calculated MW

83kDa

### Category

Primary antibody

### Applications

ELISA, WB, IF/ICC

### Cross-Reactivity

Human

## Background

MAD1L1 is a component of the mitotic spindle-assembly checkpoint that prevents the onset of anaphase until all chromosome are properly aligned at the metaphase plate. MAD1L1 functions as a homodimer and interacts with MAD2L1. MAD1L1 may play a role in cell cycle control and tumor suppression. Alternative splicing results in multiple transcript variants.

## Recommended Dilutions

WB 1:500 - 1:2000

IF/ICC 1:50 - 1:200

## Immunogen Information

### Gene ID

8379

### Swiss Prot

Q9Y6D9

### Immunogen

Recombinant fusion protein containing a sequence corresponding to amino acids 360-700 of human MAD1/MAD1/MAD1L1 (NP\_001013859.1).

### Synonyms

MAD1; MVA7; PIG9; TP53I9; TXBP181; MAD1/MAD1L1

## Contact

☎ | 400-999-6126

✉ | [cn.market@abclonal.com.cn](mailto:cn.market@abclonal.com.cn)

🌐 | [www.abclonal.com.cn](http://www.abclonal.com.cn)

## Product Information

### Source

Rabbit

### Isotype

IgG

### Purification

Affinity purification

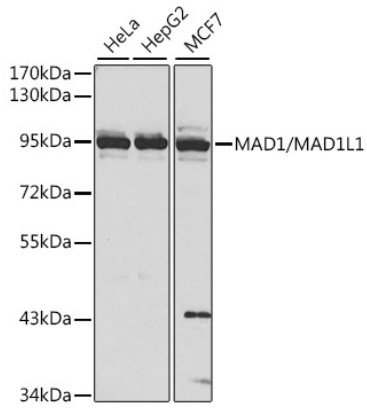
### Storage

Store at -20°C. Avoid freeze / thaw cycles.

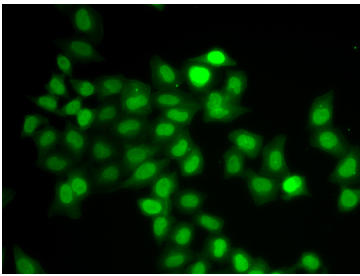
Buffer: PBS with 0.02% sodium azide, 50% glycerol, pH 7.3.

## Validation Data

---



Western blot analysis of extracts of various cell lines, using MAD1/MAD1/MAD1L1 antibody (A1153) at 1:1000 dilution.  
Secondary antibody: HRP Goat Anti-Rabbit IgG (H+L) (AS014) at 1:10000 dilution.  
Lysates/proteins: 25µg per lane.  
Blocking buffer: 3% nonfat dry milk in TBST.  
Detection: ECL Basic Kit (RM00020).



Immunofluorescence analysis of U2OS cells using MAD1/MAD1/MAD1L1 antibody (A1153).