

GOLPH2 Rabbit mAb

Catalog No.: A11538 **Recombinant**

Basic Information

Observed MW

80kDa

Calculated MW

45kDa

Category

Primary antibody

Applications

ELISA, WB

Cross-Reactivity

Human, Mouse, Rat

CloneNo number

ARC0697

Background

The Golgi complex plays a key role in the sorting and modification of proteins exported from the endoplasmic reticulum. The protein encoded by this gene is a type II Golgi transmembrane protein. It processes proteins synthesized in the rough endoplasmic reticulum and assists in the transport of protein cargo through the Golgi apparatus. The expression of this gene has been observed to be upregulated in response to viral infection. Alternatively spliced transcript variants encoding the same protein have been described for this gene.

Recommended Dilutions

WB 1:500 - 1:1000

Immunogen Information

Gene ID

51280

Swiss Prot

Q8NBJ4

Immunogen

A synthetic peptide corresponding to a sequence within amino acids 250-350 of human GOLPH2 (Q8NBJ4).

Synonyms

GP73; HEL46; GOLPH2; C9orf155; PSEC0257; bA379P1.3

Contact

 | 400-999-6126

 | cn.market@abclonal.com.cn

 | www.abclonal.com.cn

Product Information

Source

Rabbit

Isotype

IgG

Purification

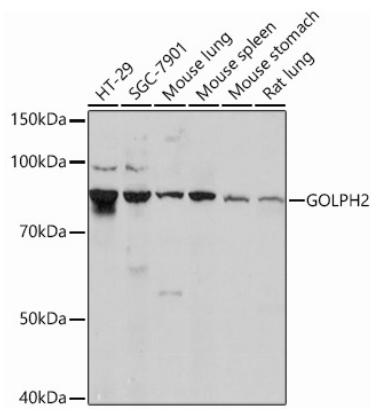
Affinity purification

Storage

Store at -20°C. Avoid freeze / thaw cycles.

Buffer: PBS with 0.02% sodium azide, 0.05% BSA, 50% glycerol, pH7.3.

Validation Data



Western blot analysis of extracts of various cell lines, using GOLPH2 Rabbit mAb (A11538) at 1:1000 dilution.

Secondary antibody: HRP Goat Anti-Rabbit IgG (H+L) (AS014) at 1:10000 dilution.

Lysates/proteins: 25µg per lane.

Blocking buffer: 3% nonfat dry milk in TBST.

Detection: ECL Basic Kit (RM00020).

Exposure time: 3min.