

CHD4 Rabbit pAb

Catalog No.: A11574 **1 Publications**

Basic Information

Observed MW

280kDa

Calculated MW

218kDa

Category

Primary antibody

Applications

ELISA, WB, IHC-P, IF/ICC

Cross-Reactivity

Human, Mouse, Rat

Background

The product of this gene belongs to the SNF2/RAD54 helicase family. It represents the main component of the nucleosome remodeling and deacetylase complex and plays an important role in epigenetic transcriptional repression. Patients with dermatomyositis develop antibodies against this protein. Somatic mutations in this gene are associated with serous endometrial tumors. Alternative splicing results in multiple transcript variants encoding different isoforms.

Recommended Dilutions

WB	1:500 - 1:2000
IHC-P	1:100 - 1:200
IF/ICC	1:50 - 1:200

Immunogen Information

Gene ID

1108

Swiss Prot

Q14839

Immunogen

Recombinant fusion protein containing a sequence corresponding to amino acids 1520-1690 of human CHD4 (NP_001264.2).

Synonyms

CHD-4; Mi-2b; SIHIWES; Mi2-BETA; CHD4

Contact

☎ | 400-999-6126

✉ | cn.market@abclonal.com.cn

🌐 | www.abclonal.com.cn

Product Information

Source

Rabbit

Isotype

IgG

Purification

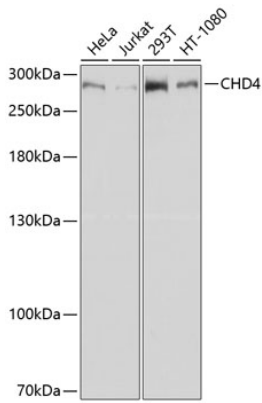
Affinity purification

Storage

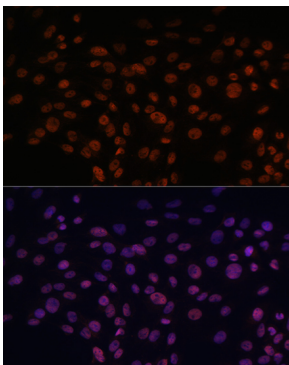
Store at -20°C. Avoid freeze / thaw cycles.

Buffer: PBS with 0.02% sodium azide, 50% glycerol, pH7.3.

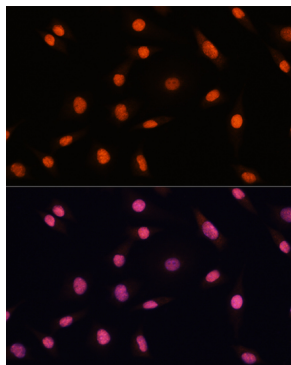
Validation Data



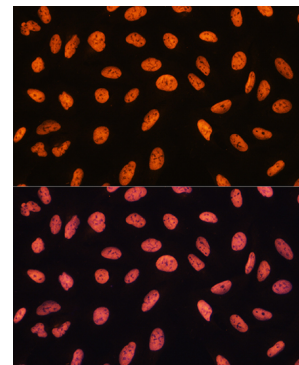
Western blot analysis of various lysates using CHD4 Rabbit pAb (A11574) at 1:1000 dilution.
Secondary antibody: HRP Goat Anti-Rabbit IgG (H+L) (AS014) at 1:10000 dilution.
Lysates/proteins: 25µg per lane.
Blocking buffer: 3% nonfat dry milk in TBST.
Detection: ECL Basic Kit (RM00020).
Exposure time: 30s.



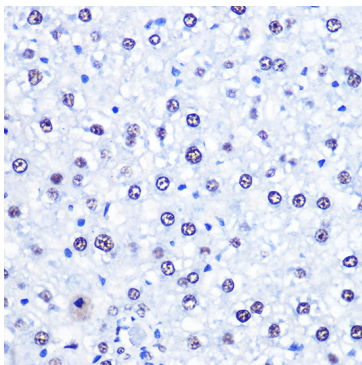
Immunofluorescence analysis of C6 cells using CHD4 Rabbit pAb (A11574) at dilution of 1:100. Blue: DAPI for nuclear staining.



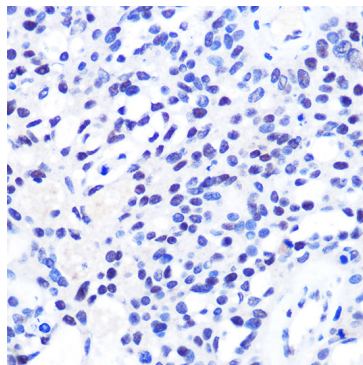
Immunofluorescence analysis of L929 cells using CHD4 Rabbit pAb (A11574) at dilution of 1:100. Blue: DAPI for nuclear staining.



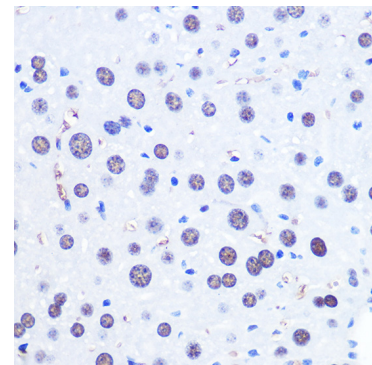
Immunofluorescence analysis of U20S cells using CHD4 Rabbit pAb (A11574) at dilution of 1:100. Blue: DAPI for nuclear staining.



Immunohistochemistry analysis of paraffin-embedded rat liver using CHD4 Rabbit pAb (A11574) at dilution of 1:100 (40x lens). Perform microwave antigen retrieval with 10 mM PBS buffer pH 7.2 before commencing with IHC staining protocol.



Immunohistochemistry analysis of paraffin-embedded human oophoroma using CHD4 Rabbit pAb (A11574) at dilution of 1:100 (40x lens). Perform microwave antigen retrieval with 10 mM PBS buffer pH 7.2 before commencing with IHC staining protocol.



Immunohistochemistry analysis of paraffin-embedded mouse liver using CHD4 Rabbit pAb (A11574) at dilution of 1:100 (40x lens). Perform microwave antigen retrieval with 10 mM PBS buffer pH 7.2 before commencing with IHC staining protocol.