

[KD Validated] EGFR Rabbit pAb

Catalog No.: A11576 **1 Publications**

Basic Information

Observed MW

175kDa

Calculated MW

134kDa

Category

Primary antibody

Applications

ELISA, WB

Cross-Reactivity

Human, Mouse, Rat

Background

The protein encoded by this gene is a transmembrane glycoprotein that is a member of the protein kinase superfamily. This protein is a receptor for members of the epidermal growth factor family. EGFR is a cell surface protein that binds to epidermal growth factor, thus inducing receptor dimerization and tyrosine autophosphorylation leading to cell proliferation. Mutations in this gene are associated with lung cancer. EGFR is a component of the cytokine storm which contributes to a severe form of Coronavirus Disease 2019 (COVID-19) resulting from infection with severe acute respiratory syndrome coronavirus-2 (SARS-CoV-2).

Recommended Dilutions

WB 1:500 - 1:1000

Immunogen Information

Gene ID

1956

Swiss Prot

P00533

Immunogen

A synthetic peptide corresponding to a sequence within amino acids 1100-1200 of human EGFR (NP_005219.2).

Synonyms

ERBB; ERBP; HER1; mENA; ERBB1; PIG61; NISBD2; EGFR

Contact

 | 400-999-6126 | cn.market@abclonal.com.cn | www.abclonal.com.cn

Product Information

Source

Rabbit

Isotype

IgG

Purification

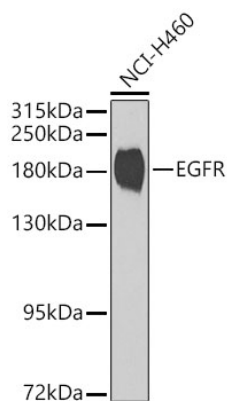
Affinity purification

Storage

Store at -20°C. Avoid freeze / thaw cycles.

Buffer: PBS with 0.02% sodium azide, 50% glycerol, pH 7.3.

Validation Data



Western blot analysis of lysates from NCI-H460 cells using [KD Validated] EGFR Rabbit pAb(A11576) at 1:1000 dilution.

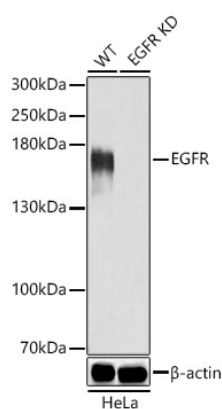
Secondary antibody: HRP Goat Anti-Rabbit IgG (H+L) (AS014) at 1:10000 dilution.

Lysates/proteins: 25 µg per lane.

Blocking buffer: 3% nonfat dry milk in TBST.

Detection: ECL Basic Kit (RM00020).

Exposure time: 90s.



Western blot analysis of lysates from wild type (WT) and EGFR knockdown (KD) HeLa cells using [KD Validated] EGFR Rabbit pAb (A11576) at 1:3000 dilution.

Secondary antibody:HRP Goat Anti-Rabbit IgG (H+L)(AS014) at 1:10000 dilution.Lysates/proteins: 25 µg per lane.

Blocking buffer: 3% nonfat dry milk in TBST.

Detection: ECL Basic Kit (RM00020).

Exposure time: 10s.