

# eIF4A1 Rabbit mAb

Catalog No.: A11584 **Recombinant** **1 Publications**

## Basic Information

### Observed MW

46kDa

### Calculated MW

46kDa

### Category

Primary antibody

### Applications

WB,IHC-P,IF/ICC,IP,ELISA

### Cross-Reactivity

Human, Mouse, Rat

### CloneNo number

ARC0636


## Background

Enables double-stranded RNA binding activity. Predicted to be involved in cytoplasmic translational initiation. Located in cytoplasm.

## Recommended Dilutions

|               |  |
|---------------|--|
| <b>WB</b>     | 1:500 - 1:2000   |
| <b>IHC-P</b>  | 1:50 - 1:200   |
| <b>IF/ICC</b> | 1:50 - 1:200   |
| <b>IP</b>     | 0.5µg-4µg antibody for<br>200µg-400µg extracts of<br>whole cells   |
| <b>ELISA</b>  | Recommended starting<br>concentration is 1 µg/mL.<br>Please optimize the<br>concentration based on<br>your specific assay<br>requirements. |

## Contact

 | 400-999-6126

 | [cn.market@abclonal.com.cn](mailto:cn.market@abclonal.com.cn)

 | [www.abclonal.com.cn](http://www.abclonal.com.cn)

## Immunogen Information

### Gene ID

1973

### Swiss Prot

P60842

### Immunogen

A synthetic peptide corresponding to a sequence within amino acids 1-100 of human eIF4A1 (P60842).

### Synonyms

DDX2A; EIF4A; EIF-4A; eIF4A-I; eIF-4A-I; eIF4A1

## Product Information

### Source

Rabbit

### Isotype

IgG

### Purification

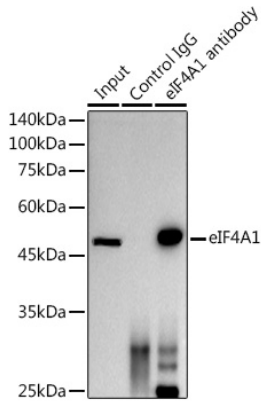
Affinity purification

### Storage

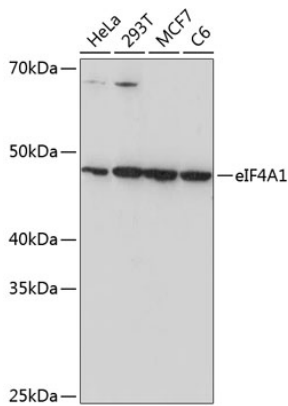
Store at -20°C. Avoid freeze / thaw cycles.

Buffer: PBS with 0.02% sodium azide,0.05% BSA,50% glycerol,pH7.3.

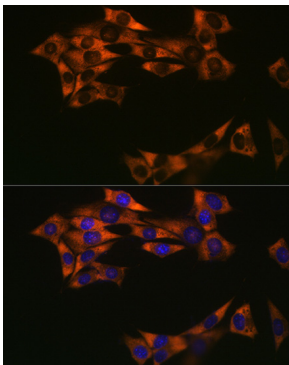
## Validation Data



Immunoprecipitation analysis of 300 µg extracts of MCF7 cells using 3 µg eIF4A1 antibody (A11584). Western blot was performed from the immunoprecipitate using eIF4A1 (A11584) at a dilution of 1:1000.



Western blot analysis of various lysates using eIF4A1 Rabbit mAb (A11584) at 1:1000 dilution. Secondary antibody: HRP-conjugated Goat anti-Rabbit IgG (H+L) (AS014) at 1:10000 dilution. Lysates/proteins: 25µg per lane. Blocking buffer: 3% nonfat dry milk in TBST. Detection: ECL Basic Kit (RM00020). Exposure time: 10s.



Immunofluorescence analysis of NIH-3T3 cells using eIF4A1 Rabbit mAb (A11584) at dilution of 1:100 (40x lens). Secondary antibody: Cy3-conjugated Goat anti-Rabbit IgG (H+L) (AS007) at 1:500 dilution. Blue: DAPI for nuclear staining.