

SEC13 Rabbit pAb

Catalog No.: A11613 **3 Publications**

Basic Information

Observed MW

38kDa

Calculated MW

36kDa

Category

Primary antibody

Applications

WB,IHC,IF/ICC,ELISA

Cross-Reactivity

Human, Mouse, Rat

Background

The protein encoded by this gene belongs to the SEC13 family of WD-repeat proteins. It is a constituent of the endoplasmic reticulum and the nuclear pore complex. It has similarity to the yeast SEC13 protein, which is required for vesicle biogenesis from endoplasmic reticulum during the transport of proteins. Multiple alternatively spliced transcript variants have been found.

Recommended Dilutions

WB 1:500 - 1:2000

IHC 1:50-1:200

IF/ICC 1:50-1:200

ELISA Recommended starting concentration is 1 µg/mL. Please optimize the concentration based on your specific assay requirements.

Immunogen Information

Gene ID

6396

Swiss Prot

P55735

Immunogen

Recombinant fusion protein containing a sequence corresponding to amino acids 1-322 of human SEC13 (NP_899195.1).

Synonyms

SEC13R; npp-20; SEC13L1; D3S1231E; SEC13

Contact

☎ | 400-999-6126

✉ | cn.market@abclonal.com.cn

🌐 | www.abclonal.com.cn

Product Information

Source

Rabbit

Isotype

IgG

Purification

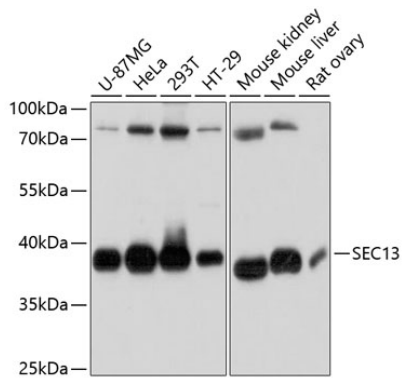
Affinity purification

Storage

Store at -20°C. Avoid freeze / thaw cycles.

Buffer: PBS with 0.01% thimerosal, 50% glycerol, pH7.3.

Validation Data



Western blot analysis of various lysates using SEC13 Rabbit pAb (A11613) at 1:3000 dilution.
Secondary antibody: HRP-conjugated Goat anti-Rabbit IgG (H+L) (AS014) at 1:10000 dilution.
Lysates/proteins: 25µg per lane.
Blocking buffer: 3% nonfat dry milk in TBST.
Detection: ECL Basic Kit (RM00020).
Exposure time: 10s.