

LAMTOR1 Rabbit pAb

Catalog No.: A11619 **2 Publications**

Basic Information

Observed MW

18kDa

Calculated MW

18kDa

Category

Primary antibody

Applications

ELISA, WB, IF/ICC

Cross-Reactivity

Human, Mouse, Rat

Background

Enables GTPase binding activity. Contributes to guanyl-nucleotide exchange factor activity and molecular adaptor activity. Involved in several processes, including cholesterol homeostasis; positive regulation of TOR signaling; and regulation of cholesterol transport. Located in lysosome. Part of Ragulator complex.

Recommended Dilutions

WB 1:500 - 1:1000

IF/ICC 1:50 - 1:100

Immunogen Information

Gene ID

55004

Swiss Prot

Q6IAA8

Immunogen

Recombinant fusion protein containing a sequence corresponding to amino acids 1-161 of human LAMTOR1 (NP_060377.1).

Synonyms

p18; PDRO; C11orf59; p27RF-Rho; Ragulator1; LAMTOR1

Contact

☎ | 400-999-6126

✉ | cn.market@abclonal.com.cn

🌐 | www.abclonal.com.cn

Product Information

Source

Rabbit

Isotype

IgG

Purification

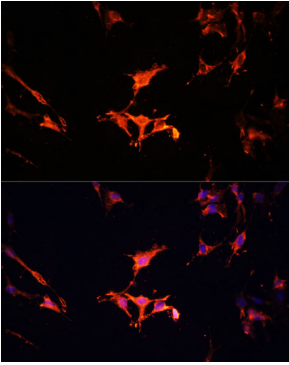
Affinity purification

Storage

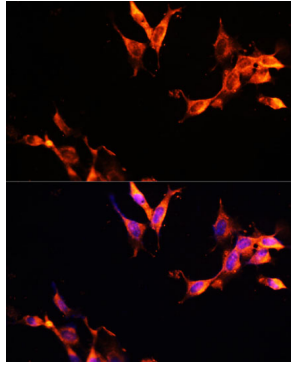
Store at -20°C. Avoid freeze / thaw cycles.

Buffer: PBS with 0.01% thimerosal, 50% glycerol, pH7.3.

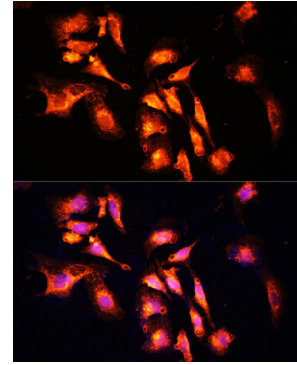
Validation Data



Immunofluorescence analysis of C6 cells using LAMTOR1 Rabbit pAb (A11619) at dilution of 1:100 (40x lens). Secondary antibody: Cy3 Goat Anti-Rabbit IgG (H+L) (AS007) at 1:500 dilution. Blue: DAPI for nuclear staining.



Immunofluorescence analysis of NIH-3T3 cells using LAMTOR1 Rabbit pAb (A11619) at dilution of 1:100 (40x lens). Secondary antibody: Cy3 Goat Anti-Rabbit IgG (H+L) (AS007) at 1:500 dilution. Blue: DAPI for nuclear staining.



Immunofluorescence analysis of U-2 OS cells using LAMTOR1 Rabbit pAb (A11619) at dilution of 1:100 (40x lens). Secondary antibody: Cy3 Goat Anti-Rabbit IgG (H+L) (AS007) at 1:500 dilution. Blue: DAPI for nuclear staining.