

SLC6A5 Rabbit pAb

Catalog No.: A11647

Basic Information

Observed MW

60kDa

Calculated MW

87kDa

Category

Primary antibody

Applications

ELISA, WB

Cross-Reactivity

Human, Mouse, Rat

Background

This gene encodes a sodium- and chloride-dependent glycine neurotransmitter transporter. This integral membrane glycoprotein is responsible for the clearance of extracellular glycine during glycine-mediated neurotransmission. This protein is found in glycinergic axons and maintains a high presynaptic pool of neurotransmitter at glycinergic synapses. Mutations in this gene cause hyperekplexia; a heterogenous neurological disorder characterized by exaggerated startle responses and neonatal apnea. Two transcript variants encoding different isoforms have been found for this gene.

Recommended Dilutions

WB 1:500 - 1:2000

Immunogen Information

Gene ID

9152

Swiss Prot

Q9Y345

Immunogen

Recombinant fusion protein containing a sequence corresponding to amino acids 1-200 of human SLC6A5 (NP_004202.3).

Synonyms

NET1; GLYT2; HKPX3; GLYT-2; SLC6A5

Contact

 | 400-999-6126

 | cn.market@abclonal.com.cn

 | www.abclonal.com.cn

Product Information

Source

Rabbit

Isotype

IgG

Purification

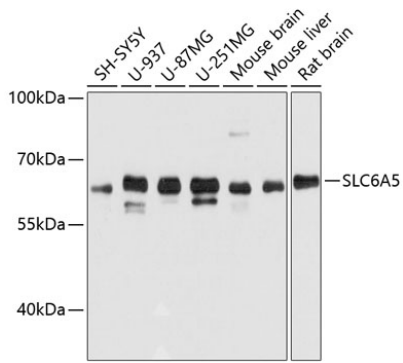
Affinity purification

Storage

Store at -20°C. Avoid freeze / thaw cycles.

Buffer: PBS with 0.01% thimerosal, 50% glycerol, pH7.3.

Validation Data



Western blot analysis of various lysates using SLC6A5 Rabbit pAb (A11647) at 1:3000 dilution.
Secondary antibody: HRP Goat Anti-Rabbit IgG (H+L) (AS014) at 1:10000 dilution.
Lysates/proteins: 25µg per lane.
Blocking buffer: 3% nonfat dry milk in TBST.
Detection: ECL Basic Kit (RM00020).
Exposure time: 5s.