

APOBEC3D Rabbit pAb

Catalog No.: A11648 **1 Publications**

Basic Information

Observed MW

43kDa

Calculated MW

47kDa

Category

Primary antibody

Applications

ELISA, WB

Cross-Reactivity

Human, Mouse, Rat

Background

This gene is a member of the cytidine deaminase gene family. It is one of a group of related genes found in a cluster, thought to result from gene duplication, on chromosome 22. Members of the cluster encode proteins that are structurally and functionally related to the C to U RNA-editing cytidine deaminase APOBEC1 and inhibit retroviruses, such as HIV, by deaminating cytosine residues in nascent retroviral cDNA.

Recommended Dilutions

WB 1:500 - 1:2000

Immunogen Information

Gene ID

140564

Swiss Prot

Q96AK3


Immunogen

Recombinant fusion protein containing a sequence corresponding to amino acids 207-386 of human APOBEC3D (NP_689639.2).

Synonyms

A3D; A3DE; ARP6; APOBEC3E; APOBEC3DE; APOBEC3D

Contact

 | 400-999-6126

 | cn.market@abclonal.com.cn

 | www.abclonal.com.cn

Product Information

Source

Rabbit

Isotype

IgG

Purification

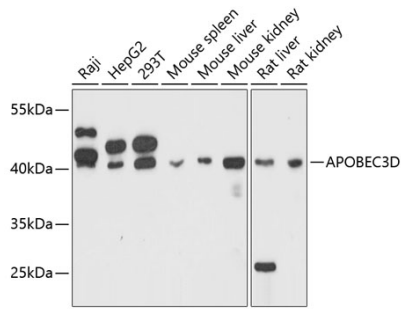
Affinity purification

Storage

Store at -20°C. Avoid freeze / thaw cycles.

Buffer: PBS with 0.01% thimerosal, 50% glycerol, pH7.3.

Validation Data



Western blot analysis of various lysates using APOBEC3D Rabbit pAb (A11648) at 1:3000 dilution.
Secondary antibody: HRP Goat Anti-Rabbit IgG (H+L) (AS014) at 1:10000 dilution.
Lysates/proteins: 25µg per lane.
Blocking buffer: 3% nonfat dry milk in TBST.
Detection: ECL Basic Kit (RM00020).
Exposure time: 60s.