

HB-EGF Rabbit mAb

Catalog No.: A11657 **Recombinant**

Basic Information

Observed MW

18-28kDa

Calculated MW

23kDa

Category

Primary antibody

Applications

WB,ELISA

Cross-Reactivity

Human, Mouse, Rat

CloneNo number

ARC0663

Background

Enables growth factor activity and heparin binding activity. Involved in several processes, including epidermal growth factor receptor signaling pathway; positive regulation of protein kinase B signaling; and positive regulation of wound healing. Located in cell surface and extracellular space. Implicated in glomerulosclerosis and perinatal necrotizing enterocolitis.

Recommended Dilutions

WB 1:1000 - 1:2000

ELISA Recommended starting concentration is 1 µg/mL. Please optimize the concentration based on your specific assay requirements.

Immunogen Information

Gene ID

1839

Swiss Prot

Q99075

Immunogen

A synthetic peptide corresponding to a sequence within amino acids 50-150 of human HB-EGF (Q99075).

Synonyms

DTR; DTS; DTSF; HEGFL; HB-EGF

Contact

☎ | 400-999-6126

✉ | cn.market@abclonal.com.cn

🌐 | www.abclonal.com.cn

Product Information

Source

Rabbit

Isotype

IgG

Purification

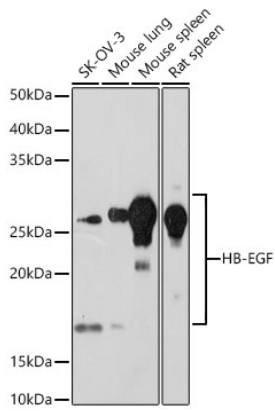
Affinity purification

Storage

Store at -20°C. Avoid freeze / thaw cycles.

Buffer: PBS with 0.02% sodium azide,0.05% BSA,50% glycerol,pH7.3.

Validation Data



Western blot analysis of various lysates using HB-EGF Rabbit mAb (A11657) at 1:1000 dilution.
Secondary antibody: HRP-conjugated Goat anti-Rabbit IgG (H+L) (AS014) at 1:10000 dilution.
Lysates/proteins: 25µg per lane.
Blocking buffer: 3% nonfat dry milk in TBST.
Detection: ECL Basic Kit (RM00020).
Exposure time: 90s.