

# SMPD2 Rabbit pAb

Catalog No.: A1166

## Basic Information

### Observed MW

50kDa

### Calculated MW

48kDa

### Category

Primary antibody

### Applications

ELISA, WB

### Cross-Reactivity

Mouse, Rat

## Background

This gene encodes a protein which was initially identified as a sphingomyelinase based on sequence similarity between bacterial sphingomyelinases and a yeast protein. Subsequent studies showed that its biological function is less likely to be as a sphingomyelinase and instead as a lysophospholipase.

## Recommended Dilutions

WB 1:500 - 1:2000

## Immunogen Information

### Gene ID

6610

### Swiss Prot

O60906

### Immunogen

A synthetic peptide corresponding to a sequence within amino acids 150-250 of human SMPD2 (NP\_003071.2).

### Synonyms

ISC1; NSMASE; NSMASE1; SMPD2

## Contact

 | 400-999-6126

 | [cn.market@abclonal.com.cn](mailto:cn.market@abclonal.com.cn)

 | [www.abclonal.com.cn](http://www.abclonal.com.cn)

## Product Information

### Source

Rabbit

### Isotype

IgG

### Purification

Affinity purification

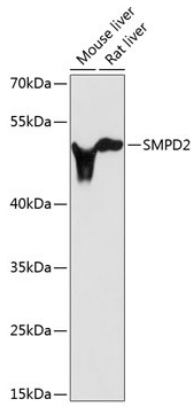
### Storage

Store at -20°C. Avoid freeze / thaw cycles.

Buffer: PBS with 0.01% thimerosal, 50% glycerol, pH7.3.

## Validation Data

---



Western blot analysis of various lysates using SMPD2 Rabbit pAb (A1166) at 1:3000 dilution.  
Secondary antibody: HRP Goat Anti-Rabbit IgG (H+L) (AS014) at 1:10000 dilution.  
Lysates/proteins: 25µg per lane.  
Blocking buffer: 3% nonfat dry milk in TBST.  
Detection: ECL Basic Kit (RM00020).  
Exposure time: 90s.