

# PNPT1 Rabbit pAb

Catalog No.: A11676

## Basic Information

### Observed MW

110kDa

### Calculated MW

86kDa

### Category

Primary antibody

### Applications

ELISA, WB

### Cross-Reactivity

Human

## Background

The protein encoded by this gene belongs to the evolutionary conserved polynucleotide phosphorylase family comprised of phosphate dependent 3'-to-5' exoribonucleases implicated in RNA processing and degradation. This enzyme is predominantly localized in the mitochondrial intermembrane space and is involved in import of RNA to mitochondria. Mutations in this gene have been associated with combined oxidative phosphorylation deficiency-13 and autosomal recessive nonsyndromic deafness-70. Related pseudogenes are found on chromosomes 3 and 7.

## Recommended Dilutions

WB 1:500 - 1:2000

## Immunogen Information

### Gene ID

87178

### Swiss Prot

Q8TCS8

### Immunogen

Recombinant fusion protein containing a sequence corresponding to amino acids 1-260 of human PNPT1 (NP\_149100.2).

### Synonyms

OLD35; SCA25; DFNB70; PNPASE; old-35; COXPD13; PNPT1

## Contact

☎ | 400-999-6126

✉ | [cn.market@abclonal.com.cn](mailto:cn.market@abclonal.com.cn)

🌐 | [www.abclonal.com.cn](http://www.abclonal.com.cn)

## Product Information

### Source

Rabbit

### Isotype

IgG

### Purification

Affinity purification

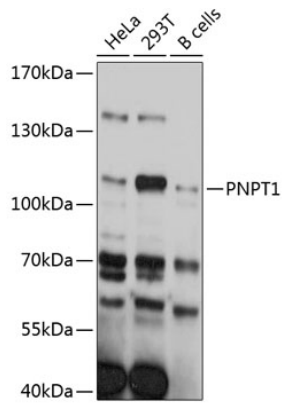
### Storage

Store at -20°C. Avoid freeze / thaw cycles.

Buffer: PBS with 0.01% thimerosal, 50% glycerol, pH 7.3.

## Validation Data

---



Western blot analysis of various lysates using PNPT1 Rabbit pAb (A11676) at 1:3000 dilution.  
Secondary antibody: HRP Goat Anti-Rabbit IgG (H+L) (AS014) at 1:10000 dilution.  
Lysates/proteins: 25 $\mu$ g per lane.  
Blocking buffer: 3% nonfat dry milk in TBST.  
Detection: ECL Basic Kit (RM00020).  
Exposure time: 10s.