

Zinc- α 2-glycoprotein (ZAG/AZGP1) Rabbit mAb

Catalog No.: A11680 **Recombinant**

Basic Information

Observed MW

45kDa

Calculated MW

34kDa

Category

Primary antibody

Applications

ELISA, WB, IHC-P

Cross-Reactivity

Human, Rat

CloneNo number

ARC0673

Background

Involved in cell adhesion and detection of chemical stimulus involved in sensory perception of bitter taste. Located in extracellular space.

Recommended Dilutions

WB 1:500 - 1:2000

IHC-P 1:50 - 1:200

Immunogen Information

Gene ID

563

Swiss Prot

P25311

Immunogen

A synthetic peptide corresponding to a sequence within amino acids 1-100 of human Zinc- α 2-glycoprotein (ZAG/AZGP1) (P25311).

Synonyms

ZAG; ZA2G; Zinc- α 2-glycoprotein (ZAG/AZGP1)

Contact

 | 400-999-6126

 | cn.market@abclonal.com.cn

 | www.abclonal.com.cn

Product Information

Source

Rabbit

Isotype

IgG

Purification

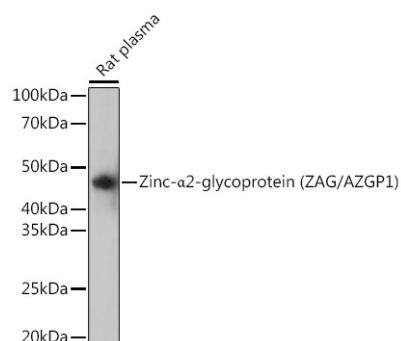
Affinity purification

Storage

Store at -20°C. Avoid freeze / thaw cycles.

Buffer: PBS with 0.02% sodium azide, 0.05% BSA, 50% glycerol, pH7.3.

Validation Data



Western blot analysis of lysates from Rat plasma, using Zinc- α 2-glycoprotein (ZAG/AZGP1) Rabbit mAb (A11680) at 1:1000 dilution.

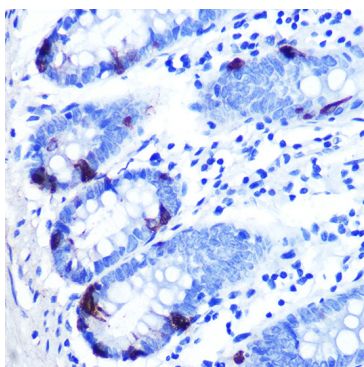
Secondary antibody: HRP Goat Anti-Rabbit IgG (H+L) (AS014) at 1:10000 dilution.

Lysates/proteins: 25 μ g per lane.

Blocking buffer: 3% nonfat dry milk in TBST.

Detection: ECL Basic Kit (RM00020).

Exposure time: 3min.



Immunohistochemistry analysis of paraffin-embedded human colon carcinoma using Zinc- α 2-glycoprotein (ZAG/AZGP1) Rabbit mAb (A11680) at dilution of 1:100 (40x lens). Perform microwave antigen retrieval with 10 mM PBS buffer pH 7.2 before commencing with IHC staining protocol.