

# LIMA1 Rabbit pAb

Catalog No.: A11682 **1 Publications**

## Basic Information

### Observed MW

100kDa

### Calculated MW

85kDa

### Category

Primary antibody

### Applications

ELISA, WB, IHC-P

### Cross-Reactivity

Human, Mouse

## Background

This gene encodes a cytoskeleton-associated protein that inhibits actin filament depolymerization and cross-links filaments in bundles. It is downregulated in some cancer cell lines. Alternatively spliced transcript variants encoding different isoforms have been described for this gene, and expression of some of the variants maybe independently regulated.

## Recommended Dilutions

WB	1:500 - 1:2000
IHC-P	1:100 - 1:200

## Immunogen Information

### Gene ID

51474

### Swiss Prot

Q9UHB6

### Immunogen

Recombinant fusion protein containing a sequence corresponding to amino acids 560-759 of human LIMA1 (NP\_057441.1).

### Synonyms

EPLIN; LDLCQ8; SREBP3; LIMA1

## Contact

☎ | 400-999-6126

✉ | [cn.market@abclonal.com.cn](mailto:cn.market@abclonal.com.cn)

🌐 | [www.abclonal.com.cn](http://www.abclonal.com.cn)

## Product Information

### Source

Rabbit

### Isotype

IgG

### Purification

Affinity purification

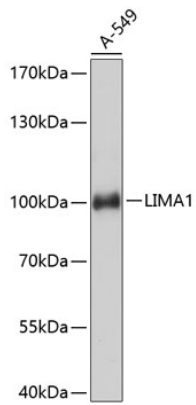
### Storage

Store at -20°C. Avoid freeze / thaw cycles.

Buffer: PBS with 0.01% thimerosal, 50% glycerol, pH7.3.

## Validation Data

---



Western blot analysis of lysates from A-549 cells, using LIMA1 Rabbit pAb (A11682) at 1:3000 dilution.  
Secondary antibody: HRP Goat Anti-Rabbit IgG (H+L) (AS014) at 1:10000 dilution.  
Lysates/proteins: 25µg per lane.  
Blocking buffer: 3% nonfat dry milk in TBST.  
Detection: ECL Basic Kit (RM00020).  
Exposure time: 10s.