

HES1 Rabbit pAb

Catalog No.: A11705 **1 Publications**

Basic Information

Observed MW

30kDa

Calculated MW

30kDa

Category

Primary antibody

Applications

WB, ELISA

Cross-Reactivity

Rat, Mouse

Background

This protein belongs to the basic helix-loop-helix family of transcription factors. It is a transcriptional repressor of genes that require a bHLH protein for their transcription. The protein has a particular type of basic domain that contains a helix interrupting protein that binds to the N-box rather than the canonical E-box.

Recommended Dilutions

WB 1:500 - 1:1000

ELISA Recommended starting concentration is 1 µg/mL. Please optimize the concentration based on your specific assay requirements.

Immunogen Information

Gene ID

3280

Swiss Prot

Q14469

Immunogen

Recombinant fusion protein containing a sequence corresponding to amino acids 151-280 of human HES1 (NP_005515.1).

Synonyms

HHL; HRY; HES-1; bHLHb39; HES1

Contact

☎ | 400-999-6126

✉ | cn.market@abclonal.com.cn

🌐 | www.abclonal.com.cn

Product Information

Source

Rabbit

Isotype

IgG

Purification

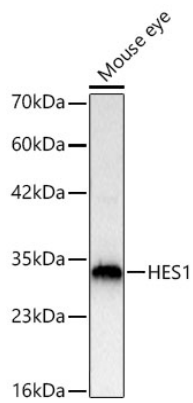
Affinity purification

Storage

Store at -20°C. Avoid freeze / thaw cycles.

Buffer: PBS with 0.05% proclin300, 50% glycerol, pH7.3.

Validation Data



Western blot analysis of lysates from Mouse eye using HES1 Rabbit pAb (A11705) at 1:1000 dilution incubated overnight at 4°C.
Secondary antibody: HRP-conjugated Goat anti-Rabbit IgG (H+L) (AS014) at 1:10000 dilution.
Lysates/proteins: 25 µg per lane.
Blocking buffer: 3% nonfat dry milk in TBST.
Detection: ECL Basic Kit (RM00020)
Exposure time: 1 s.