

SHARPIN Rabbit pAb

Catalog No.: A11714

Basic Information

Observed MW

40kDa

Calculated MW

40kDa

Category

Primary antibody

Applications

ELISA, WB

Cross-Reactivity

Human, Rat

Background

Enables polyubiquitin modification-dependent protein binding activity. Involved in protein linear polyubiquitination and regulation of signal transduction. Located in cytosol. Part of LUBAC complex.

Recommended Dilutions

WB 1:500 - 1:2000

Immunogen Information

Gene ID

81858

Swiss Prot

Q9H0F6

Immunogen

Recombinant fusion protein containing a sequence corresponding to amino acids 1-170 of human SHARPIN (NP_112236.3).

Synonyms

SIPL1; SHARPIN

Contact

 | 400-999-6126

 | cn.market@abclonal.com.cn

 | www.abclonal.com.cn

Product Information

Source

Rabbit

Isotype

IgG

Purification

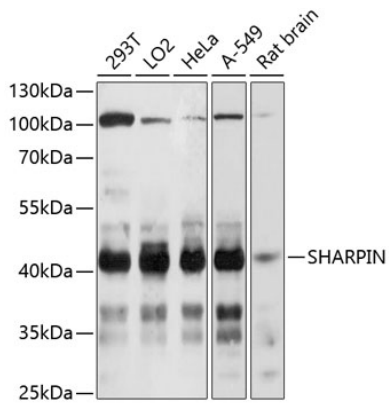
Affinity purification

Storage

Store at -20°C. Avoid freeze / thaw cycles.

Buffer: PBS with 0.01% thimerosal, 50% glycerol, pH7.3.

Validation Data



Western blot analysis of various lysates using SHARPIN Rabbit pAb (A11714) at 1:3000 dilution.
Secondary antibody: HRP Goat Anti-Rabbit IgG (H+L) (AS014) at 1:10000 dilution.
Lysates/proteins: 25µg per lane.
Blocking buffer: 3% nonfat dry milk in TBST.
Detection: ECL Basic Kit (RM00020).
Exposure time: 10s.