

SETD2 Rabbit pAb

Catalog No.: A11757 **1 Publications**

Basic Information

Observed MW

288kDa

Calculated MW

288kDa

Category

Primary antibody

Applications

ELISA, WB

Cross-Reactivity

Human

Background

Huntington's disease (HD), a neurodegenerative disorder characterized by loss of striatal neurons, is caused by an expansion of a polyglutamine tract in the HD protein huntingtin. This gene encodes a protein belonging to a class of huntingtin interacting proteins characterized by WW motifs. This protein is a histone methyltransferase that is specific for lysine-36 of histone H3, and methylation of this residue is associated with active chromatin. This protein also contains a novel transcriptional activation domain and has been found associated with hyperphosphorylated RNA polymerase II.

Recommended Dilutions

WB 1:500 - 1:2000

Immunogen Information

Gene ID

29072

Swiss Prot

Q9BYW2

Immunogen

Recombinant fusion protein containing a sequence corresponding to amino acids 803-1103 of human SETD2 (NP_054878.5).

Synonyms

LLS; HYPB; SET2; HIF-1; HIP-1; KMT3A; MRD70; RAPAS; HBP231; HSPC069; p231HBP; SETD2

Contact

 | 400-999-6126

 | cn.market@abclonal.com.cn

 | www.abclonal.com.cn

Product Information

Source

Rabbit

Isotype

IgG

Purification

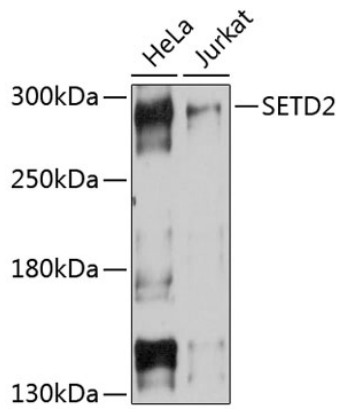
Affinity purification

Storage

Store at -20°C. Avoid freeze / thaw cycles.

Buffer: PBS with 0.01% thimerosal, 50% glycerol, pH7.3.

Validation Data



Western blot analysis of various lysates using SETD2 Rabbit pAb (A11757) at 1:1000 dilution.
Secondary antibody: HRP Goat Anti-Rabbit IgG (H+L) (AS014) at 1:10000 dilution.
Lysates/proteins: 25 μ g per lane.
Blocking buffer: 3% nonfat dry milk in TBST.
Detection: ECL Basic Kit (RM00020).
Exposure time: 15s.