

# TGF beta Receptor II Rabbit pAb

Catalog No.: A11765 **3 Publications**

## Basic Information

### Observed MW

90kDa/85kDa(□□□)

### Calculated MW

65kDa

### Category

Primary antibody

### Applications

WB,IHC-P,IF/ICC,ELISA

### Cross-Reactivity

Human, Mouse, Rat

## Background

The protein encoded by this gene is a transmembrane protein that has a protein kinase domain, forms a heterodimeric complex with TGF-beta receptor type-1, and binds TGF-beta. This receptor/ligand complex phosphorylates proteins, which then enter the nucleus and regulate the transcription of genes related to cell proliferation, cell cycle arrest, wound healing, immunosuppression, and tumorigenesis. Mutations in this gene have been associated with Marfan Syndrome, Loeys-Deitz Aortic Aneurysm Syndrome, and the development of various types of tumors. Alternatively spliced transcript variants encoding different isoforms have been characterized.

## Recommended Dilutions

|               |   |
|---------------|---|
| <b>WB</b>     | 1:500 - 1:1000  |
| <b>IHC-P</b>  | 1:50 - 1:200  |
| <b>IF/ICC</b> | 1:50 - 1:200  |
| <b>ELISA</b>  | Recommended starting concentration is 1 µg/mL. Please optimize the concentration based on your specific assay requirements. |

## Contact

|   |                           |
|---|---------------------------|
| ☎ | 400-999-6126              |
| ✉ | cn.market@abclonal.com.cn |
| 🌐 | www.abclonal.com.cn       |

## Immunogen Information

### Gene ID

7048

### Swiss Prot

P37173

### Immunogen

Recombinant fusion protein containing a sequence corresponding to amino acids 237-549 of human TGF beta Receptor II (TGFB2) (NP\_003233.4).

### Synonyms

AAT3; FAA3; LDS2; MFS2; RIIC; LDS1B; LDS2B; TAAD2; TBR11; TBR-ii; TGFR-2; tbetaR-II; TGFbeta-R11; TGF beta Receptor II (TGFB2)

## Product Information

### Source

Rabbit

### Isotype

IgG

### Purification

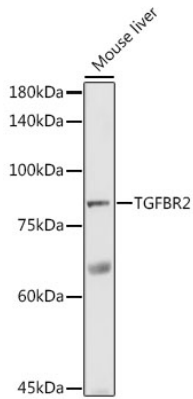
Affinity purification

### Storage

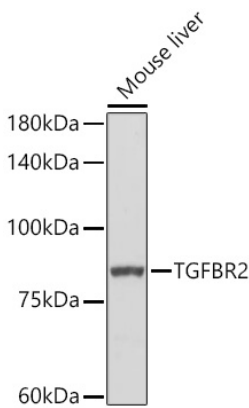
Store at -20°C. Avoid freeze / thaw cycles.

Buffer: PBS with 0.01% thimerosal, 50% glycerol, pH7.3.

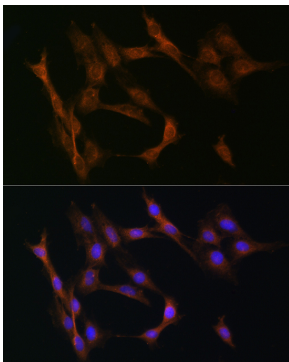
## Validation Data



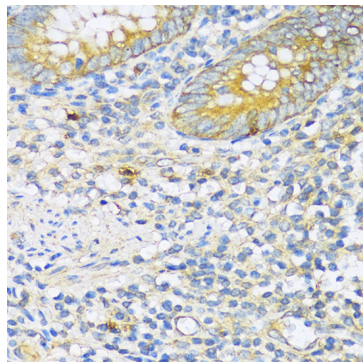
Western blot analysis of lysates from Mouse liver, using TGF beta Receptor II (TGFBR2) Rabbit pAb (A11765) at 1:1000 dilution.  
 Secondary antibody: HRP-conjugated Goat anti-Rabbit IgG (H+L) (AS014) at 1:10000 dilution.  
 Lysates/proteins: 25µg per lane.  
 Blocking buffer: 3% nonfat dry milk in TBST.  
 Detection: ECL Enhanced Kit (RM00021).  
 Exposure time: 90s.



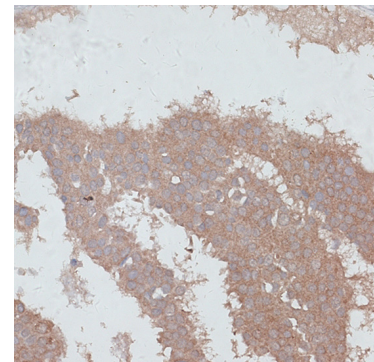
Western blot analysis of lysates from Mouse liver using TGF beta Receptor II (TGFBR2) Rabbit pAb (A11765) at 1:1000 dilution incubated overnight at 4°C.  
 Secondary antibody: HRP-conjugated Goat anti-Rabbit IgG (H+L) (AS014) at 1:10000 dilution.  
 Lysates/proteins: 25 µg per lane.  
 Blocking buffer: 3% nonfat dry milk in TBST.  
 Detection: ECL Enhanced Kit (RM00021).  
 Exposure time: 90s.



Immunofluorescence analysis of C6 cells using TGF beta Receptor II (TGF beta Receptor II (TGFBR2)) Rabbit pAb (A11765) at dilution of 1:50 (40x lens). Secondary antibody: Cy3-conjugated Goat anti-Rabbit IgG (H+L) (AS007) at 1:500 dilution. Blue: DAPI for nuclear staining.



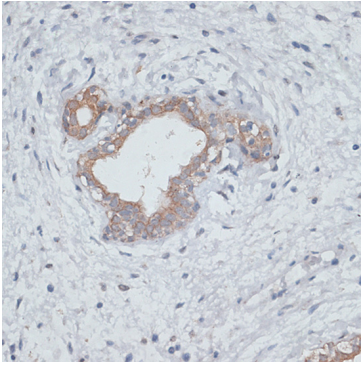
Immunohistochemistry analysis of paraffin-embedded Human appendix using TGF beta Receptor II (TGFBR2) Rabbit pAb (A11765) at dilution of 1:100 (40x lens). Microwave antigen retrieval performed with 0.01M PBS Buffer (pH 7.2) prior to IHC staining.



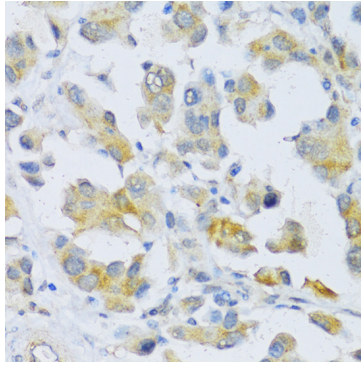
Immunohistochemistry analysis of paraffin-embedded Human breast cancer using TGF beta Receptor II (TGFBR2) Rabbit pAb (A11765) at dilution of 1:100 (40x lens). Microwave antigen retrieval performed with 0.01M PBS Buffer (pH 7.2) prior to IHC staining.

## Validation Data

---



Immunohistochemistry analysis of paraffin-embedded Human breast using TGF beta Receptor II (TGFBR2) Rabbit pAb (A11765) at dilution of 1:100 (40x lens). Microwave antigen retrieval performed with 0.01M PBS Buffer (pH 7.2) prior to IHC staining.



Immunohistochemistry analysis of paraffin-embedded Human lung cancer using TGF beta Receptor II (TGFBR2) Rabbit pAb (A11765) at dilution of 1:100 (40x lens). Microwave antigen retrieval performed with 0.01M PBS Buffer (pH 7.2) prior to IHC staining.