

# TLR3 Rabbit pAb

Catalog No.: A11778SP **13 Publications**

## Basic Information

### Observed MW

130 kDa(overexpression)

### Calculated MW

104 kDa/73 kDa

### Category

Primary antibody

### Applications

WB,ELISA

### Cross-Reactivity

Mouse, Rat

## Background

The protein encoded by this gene is a member of the Toll-like receptor (TLR) family which plays a fundamental role in pathogen recognition and activation of innate immunity. TLRs are highly conserved from *Drosophila* to humans and share structural and functional similarities. They recognize pathogen-associated molecular patterns (PAMPs) that are expressed on infectious agents, and mediate the production of cytokines necessary for the development of effective immunity. The various TLRs exhibit different patterns of expression. This receptor is most abundantly expressed in placenta and pancreas, and is restricted to the dendritic subpopulation of the leukocytes. It recognizes dsRNA associated with viral infection, and induces the activation of NF-kappaB and the production of type I interferons. It thus plays a role in host defense against multiple viruses.

## Recommended Dilutions


**WB** 1:2000 - 1:20000

**ELISA** Recommended starting concentration is 1 µg/mL. Please optimize the concentration based on your specific assay requirements. For high-ratio antibody dilutions ( $\geq 1:10000$ ) a sequential dilution method is strongly recommended to ensure measurement accuracy.

## Contact

 | 400-999-6126

 | [cn.market@abclonal.com.cn](mailto:cn.market@abclonal.com.cn)

 | [www.abclonal.com.cn](http://www.abclonal.com.cn)

## Immunogen Information

### Gene ID

7098

### Swiss Prot

O15455

### Immunogen

This information is considered to be commercially sensitive.

### Synonyms

CD283; IIAE2; IMD83; TLR3

## Product Information

### Source

Rabbit

### Isotype

IgG

### Purification

Affinity purification

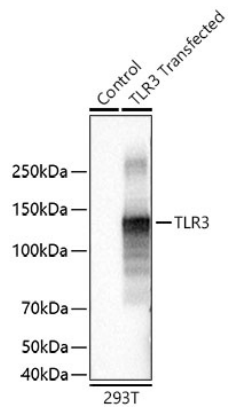
### Storage

Store at -20°C. Avoid freeze / thaw cycles.

Buffer: PBS, pH 7.3, containing 50% glycerol. Preserved with Proclin300 or sodium azide. May contain 0.05% BSA as specified on the Certificate of Analysis.

## Validation Data

---



Western blot analysis of lysates from wild type (WT) and 293T cells transfected with TLR3 using TLR3 Rabbit pAb (A11778SP) at 1:20000 dilution incubated overnight at 4°C.  
Secondary antibody: HRP-conjugated Goat anti-Rabbit IgG (H+L) (AS014) at 1:10000 dilution.  
Lysates/proteins: 20 µg per lane.  
Blocking buffer: 3% nonfat dry milk in TBST.  
Detection: ECL Basic Kit (RM00020)  
.Exposure time: 1 s.