

TGF beta Receptor II Rabbit pAb

Catalog No.: A11788 **3 Publications**

Basic Information

Observed MW

65-80kDa

Calculated MW

65kDa

Category

Primary antibody

Applications

WB,IHC-P,IF/ICC,ELISA

Cross-Reactivity

Human, Mouse, Rat

Background

The protein encoded by this gene is a transmembrane protein that has a protein kinase domain, forms a heterodimeric complex with TGF-beta receptor type-1, and binds TGF-beta. This receptor/ligand complex phosphorylates proteins, which then enter the nucleus and regulate the transcription of genes related to cell proliferation, cell cycle arrest, wound healing, immunosuppression, and tumorigenesis. Mutations in this gene have been associated with Marfan Syndrome, Loeys-Deitz Aortic Aneurysm Syndrome, and the development of various types of tumors. Alternatively spliced transcript variants encoding different isoforms have been characterized.

Recommended Dilutions

WB 1:500 - 1:1000**IHC-P** 1:50 - 1:200**IF/ICC** 1:50 - 1:200**ELISA** Recommended starting concentration is 1 µg/mL. Please optimize the concentration based on your specific assay requirements.

Immunogen Information

Gene ID

7048

Swiss Prot

P37173

Immunogen

Recombinant fusion protein containing a sequence corresponding to amino acids 23-280 of human TGF beta Receptor II (TGFB2) (NP_003233.4).

Synonyms

AAT3; FAA3; LDS2; MFS2; RIIC; LDS1B; LDS2B; TAAD2; TBR11; TBR-ii; TGFR-2; tbetaR-II; TGFbeta-R11; TGF beta Receptor II (TGFB2)

Contact

 | 400-999-6126 | cn.market@abclonal.com.cn | www.abclonal.com.cn

Product Information

Source

Rabbit

Isotype

IgG

Purification

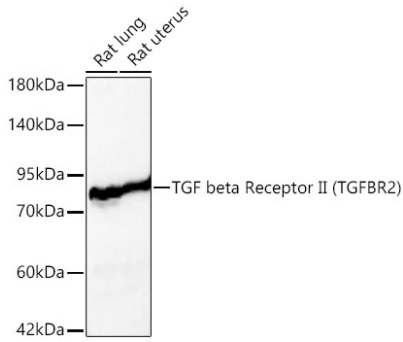
Affinity purification

Storage

Store at -20°C. Avoid freeze / thaw cycles.

Buffer: PBS with 0.05% proclin300,50% glycerol,pH7.3.

Validation Data



Western blot analysis of various lysates using TGF beta Receptor II (TGFB2) Rabbit pAb (A11788) at 1:1000 dilution.

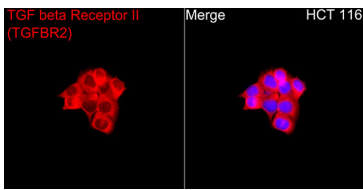
Secondary antibody: HRP-conjugated Goat anti-Rabbit IgG (H+L) (AS014) at 1:10000 dilution.

Lysates / proteins: 25 µg per lane.

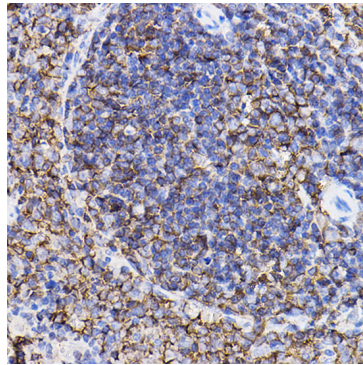
Blocking buffer: 3 % nonfat dry milk in TBST.

Detection: ECL Basic Kit (RM00020).

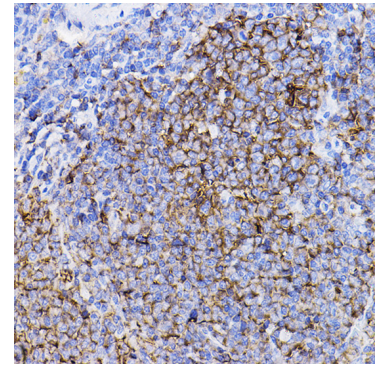
Exposure time: 30s.



Immunofluorescence analysis of HCT 116 cells using TGF beta Receptor II (TGFB2) Rabbit pAb (A11788) at a dilution of 1:200 (40x lens). Secondary antibody: Cy3-conjugated Goat anti-Rabbit IgG (H+L) (AS007) at 1:500 dilution. Blue: DAPI for nuclear staining.



Immunohistochemistry analysis of paraffin-embedded Rat spleen using TGF beta Receptor II (TGF beta Receptor II (TGFB2)) Rabbit pAb (A11788) at dilution of 1:100 (40x lens). High pressure antigen retrieval performed with 0.01M Citrate Bufferr (pH 6.0) prior to IHC staining.



Immunohistochemistry analysis of paraffin-embedded Mouse spleen using TGF beta Receptor II (TGF beta Receptor II (TGFB2)) Rabbit pAb (A11788) at dilution of 1:100 (40x lens). High pressure antigen retrieval performed with 0.01M Citrate Bufferr (pH 6.0) prior to IHC staining.