

# RAB5A Rabbit pAb

Catalog No.: A1180

4 Publications

## Basic Information

### Observed MW

24kDa

### Calculated MW

24kDa

### Category

Primary antibody

### Applications

WB, IHC-P, IF/ICC, ELISA

### Cross-Reactivity

Human, Mouse, Rat

## Background

Enables GDP binding activity; GTP binding activity; and GTPase activity. Involved in several processes, including amyloid-beta clearance by transcytosis; early endosome to late endosome transport; and regulation of exocytosis. Located in several cellular components, including cytoplasmic side of early endosome membrane; nucleoplasm; and terminal bouton.

## Recommended Dilutions

|               |   |
|---------------|---|
| <b>WB</b>     | 1:500 - 1:1000  |
| <b>IHC-P</b>  | 1:50 - 1:200  |
| <b>IF/ICC</b> | 1:50 - 1:200  |
| <b>ELISA</b>  | Recommended starting concentration is 1 µg/mL. Please optimize the concentration based on your specific assay requirements. |

## Immunogen Information

### Gene ID

5868

### Swiss Prot

P20339

### Immunogen

Recombinant protein (or fragment). This information is considered to be commercially sensitive.

### Synonyms

RAB5; RAB5A

## Contact

|   |                           |
|---|---------------------------|
| ☎ | 400-999-6126              |
| ✉ | cn.market@abclonal.com.cn |
| 🌐 | www.abclonal.com.cn       |

## Product Information

### Source

Rabbit

### Isotype

IgG

### Purification

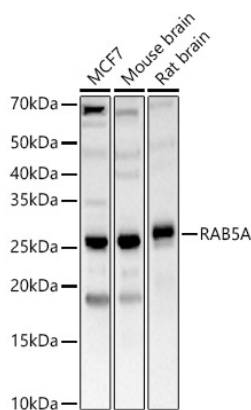
Affinity purification

### Storage

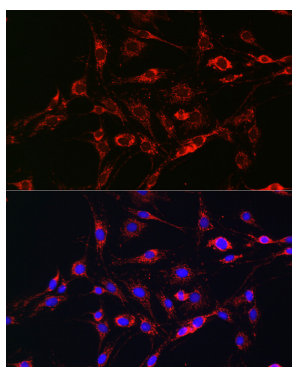
Store at -20°C. Avoid freeze / thaw cycles.

Buffer: PBS containing 50% glycerol, preserved with proclin300 or sodium azide (as specified on the Certificate of Analysis), pH 7.3.

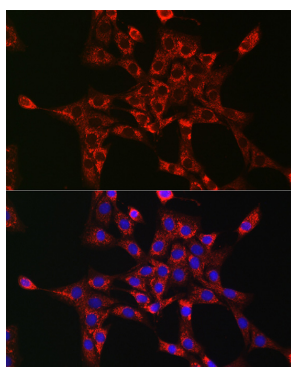
## Validation Data



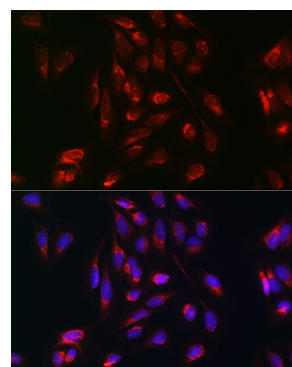
Western blot analysis of various lysates, using RAB5A Rabbit pAb (A1180) at 1:700 dilution. Secondary antibody: HRP-conjugated Goat anti-Rabbit IgG (H+L) (AS014) at 1:10000 dilution. Lysates/proteins: 25µg per lane. Blocking buffer: 3% nonfat dry milk in TBST. Detection: ECL Basic Kit (RM00020). Exposure time: 30s.



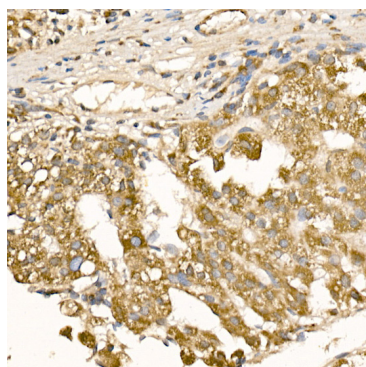
Immunofluorescence analysis of C6 cells using RAB5A Rabbit pAb (A1180) at dilution of 1:100 (40x lens). Secondary antibody: Cy3-conjugated Goat anti-Rabbit IgG (H+L) (AS007) at 1:500 dilution. Blue: DAPI for nuclear staining.



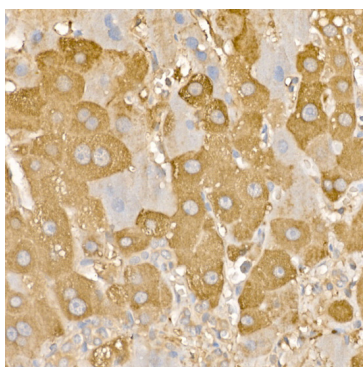
Immunofluorescence analysis of NIH-3T3 cells using RAB5A Rabbit pAb (A1180) at dilution of 1:100 (40x lens). Secondary antibody: Cy3-conjugated Goat anti-Rabbit IgG (H+L) (AS007) at 1:500 dilution. Blue: DAPI for nuclear staining.



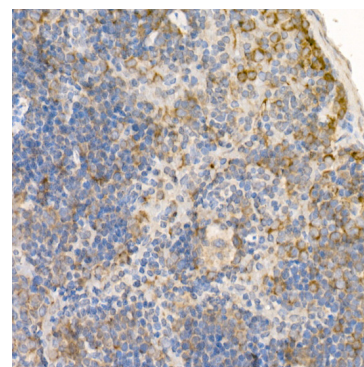
Immunofluorescence analysis of U-2 OS cells using RAB5A Rabbit pAb (A1180) at dilution of 1:100 (40x lens). Secondary antibody: Cy3-conjugated Goat anti-Rabbit IgG (H+L) (AS007) at 1:500 dilution. Blue: DAPI for nuclear staining.



Immunohistochemistry analysis of paraffin-embedded Human liver cancer using RAB5A Rabbit pAb (A1180) at dilution of 1:100 (40x lens). High pressure antigen retrieval performed with 0.01M Citrate buffer (pH 6.0) prior to IHC staining.



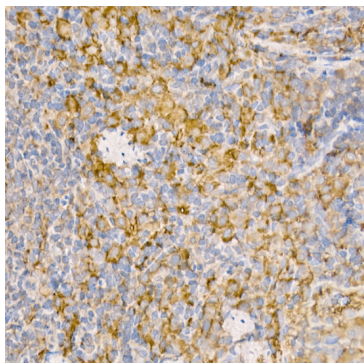
Immunohistochemistry analysis of paraffin-embedded Human liver using RAB5A Rabbit pAb (A1180) at dilution of 1:100 (40x lens). High pressure antigen retrieval performed with 0.01M Citrate buffer (pH 6.0) prior to IHC staining.



Immunohistochemistry analysis of paraffin-embedded Mouse spleen using RAB5A Rabbit pAb (A1180) at dilution of 1:100 (40x lens). High pressure antigen retrieval performed with 0.01M Citrate buffer (pH 6.0) prior to IHC staining.

## Validation Data

---



Immunohistochemistry analysis of paraffin-embedded Rat spleen using RAB5A Rabbit pAb (A1180) at dilution of 1:100 (40x lens). High pressure antigen retrieval performed with 0.01M Citrate buffer (pH 6.0) prior to IHC staining.