

CD41/ITGA2B Rabbit pAb

Catalog No.: A11836

Basic Information

Observed MW

Refer to Figures

Calculated MW

113kDa

Category

Primary antibody

Applications

ELISA,IF/ICC

Cross-Reactivity

Human

Background

This gene encodes a member of the integrin alpha chain family of proteins. The encoded preproprotein is proteolytically processed to generate light and heavy chains that associate through disulfide linkages to form a subunit of the alpha-IIb/beta-3 integrin cell adhesion receptor. This receptor plays a crucial role in the blood coagulation system, by mediating platelet aggregation. Mutations in this gene are associated with platelet-type bleeding disorders, which are characterized by a failure of platelet aggregation, including Glanzmann thrombasthenia.

Recommended Dilutions

IF/ICC 1:50 - 1:200

Immunogen Information

Gene ID

3674

Swiss Prot

P08514

Immunogen

A synthetic peptide corresponding to a sequence within amino acids 160-260 of human CD41/ITGA2B (NP_000410.2)

Synonyms

GT; GT1; GTA; CD41; GP2B; HPA3; CD41B; GPIIb; BDPLT2; BDPLT16; PPP1R93; CD41/ITGA2B

Contact

☎ | 400-999-6126

✉ | cn.market@abclonal.com.cn

🌐 | www.abclonal.com.cn

Product Information

Source

Rabbit

Isotype

IgG

Purification

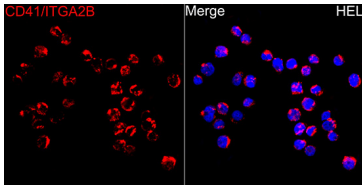
Affinity purification

Storage

Store at -20°C. Avoid freeze / thaw cycles.

Buffer: PBS with 0.02% sodium azide,50% glycerol,pH7.3.

Validation Data



Immunofluorescence analysis of HEL cells using CD41/ITGA2B Rabbit pAb(A11836) at a dilution of 1:100 (40x lens). Secondary antibody: Cy3 Goat Anti-Rabbit IgG (H+L) (AS007) at 1:500 dilution. Blue: DAPI for nuclear staining.