

CD301/CLEC10A Rabbit pAb

Catalog No.: A11859

Basic Information

Observed MW

37kDa

Calculated MW

35kDa

Category

Primary antibody

Applications

ELISA, WB

Cross-Reactivity

Human, Mouse

Background

This gene encodes a member of the C-type lectin/C-type lectin-like domain (CTL/CTLD) superfamily. Members of this family share a common protein fold and have diverse functions, such as cell adhesion, cell-cell signalling, glycoprotein turnover, and roles in inflammation and immune response. The encoded type 2 transmembrane protein may function as a cell surface antigen. Two transcript variants encoding distinct isoforms have been identified for this gene.

Recommended Dilutions

WB 1:500 - 1:2000

Immunogen Information

Gene ID

10462

Swiss Prot

Q8IUN9

Immunogen

Recombinant fusion protein containing a sequence corresponding to amino acids 60-180 of human CD301/CLEC10A (NP_878910.1).

Synonyms

HML; MGL; HML2; CD301; CLECSF13; CLECSF14; CD301/CLEC10A

Contact

☎ | 400-999-6126

✉ | cn.market@abclonal.com.cn

🌐 | www.abclonal.com.cn

Product Information

Source

Rabbit

Isotype

IgG

Purification

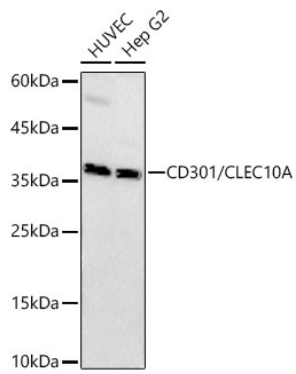
Affinity purification

Storage

Store at -20°C. Avoid freeze / thaw cycles.

Buffer: PBS with 0.01% thimerosal, 50% glycerol, pH7.3.

Validation Data



Western blot analysis of various lysates using CD301/CLEC10A Rabbit pAb (A11859) at 1:500 dilution.
Secondary antibody: HRP Goat Anti-Rabbit IgG (H+L) (AS014) at 1:10000 dilution.
Lysates / proteins: 25 µg per lane.
Blocking buffer: 3 % nonfat dry milk in TBST.
Detection: ECL Basic Kit (RM00020).
Exposure time: 90s.