

β-Catenin Rabbit pAb

Catalog No.: A11932SP **21 Publications**

Basic Information

Observed MW

92 kDa

Calculated MW

85 kDa

Category

Primary antibody

Applications

WB,IP,IF-P,IHC-P,ELISA

Cross-Reactivity

Human, Mouse, Rat

Background

The protein encoded by this gene is part of a complex of proteins that constitute adherens junctions (AJs). AJs are necessary for the creation and maintenance of epithelial cell layers by regulating cell growth and adhesion between cells. The encoded protein also anchors the actin cytoskeleton and may be responsible for transmitting the contact inhibition signal that causes cells to stop dividing once the epithelial sheet is complete. Finally, this protein binds to the product of the APC gene, which is mutated in adenomatous polyposis of the colon. Mutations in this gene are a cause of colorectal cancer (CRC), pilomatixoma (PTR), medulloblastoma (MDB), and ovarian cancer. Alternative splicing results in multiple transcript variants.

Recommended Dilutions

WB 1:4000 - 1:10000

IP 0.5 µg - 4 µg antibody for
400 µg - 600 µg extracts
of whole cells

IF-P 1:200 - 1:600

IHC-P 1:500 - 1:2000

ELISA Recommended starting concentration is 1 µg/mL. Please optimize the concentration based on your specific assay requirements. For high-ratio antibody dilutions (≥1:10000) a sequential dilution method is strongly recommended to ensure measurement accuracy.

Immunogen Information

Gene ID

1499

Swiss Prot

P35222

Immunogen

This information is considered to be commercially sensitive.

Synonyms

EVR7; CTNNB; MRD19; NEDSDV; armadillo; β-Catenin

Product Information

Source

Rabbit

Isotype

IgG

Purification

Affinity purification

Storage

Store at -20°C. Avoid freeze / thaw cycles.

Buffer: PBS, pH 7.3, containing 50% glycerol. Preserved with Proclin300 or sodium azide. May contain 0.05% BSA as specified on the Certificate of Analysis.

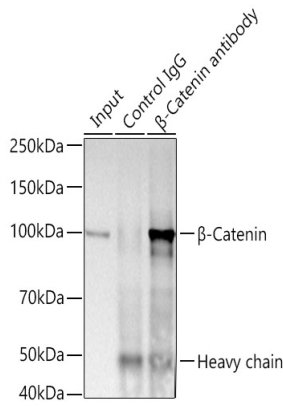
Contact

 | 400-999-6126

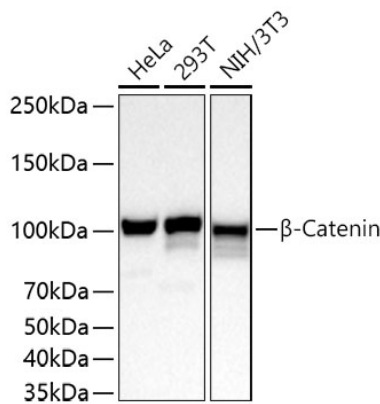
 | cn.market@abclonal.com.cn

 | www.abclonal.com.cn

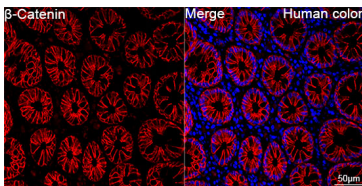
Validation Data



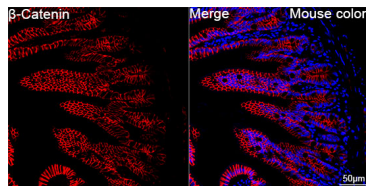
Immunoprecipitation of β -Catenin from 600 μ g extracts of Mouse brain tissue was performed using 3 μ g of β -Catenin Rabbit pAb (A11932SP). Rabbit IgG isotype control (AC005) was used to precipitate the Control IgG sample. IP samples were eluted with 1x reducing Laemmli Buffer. The Input lane represents 10% of the total input. Western blot analysis of immunoprecipitates was conducted using β -Catenin Rabbit pAb (A11932SP) at a dilution of 1:1000.



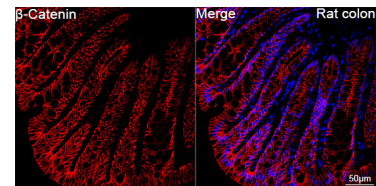
Western blot analysis of various lysates using β -Catenin Rabbit pAb (A11932SP) at 1:4000 dilution incubated at room temperature for 1.5 hours.
 Secondary antibody: HRP-conjugated Goat anti-Rabbit IgG (H+L) (AS014) at 1:10000 dilution.
 Lysates/proteins: 25 μ g per lane.
 Blocking buffer: 3% nonfat dry milk in TBST.
 Detection: ECL Basic Kit (RM00020).
 Exposure time: 45 s.



Confocal imaging of paraffin-embedded Human colon tissue using β -Catenin Rabbit pAb (A11932SP, dilution 1:200) followed by a further incubation with Cy3-conjugated Goat anti-Rabbit IgG (H+L) (AS007, dilution 1:500) (Red). DAPI was used for nuclear staining (Blue). High pressure antigen retrieval performed with 0.01M Citrate Buffer (pH 6.0) prior to IF staining. Objective: 40x.

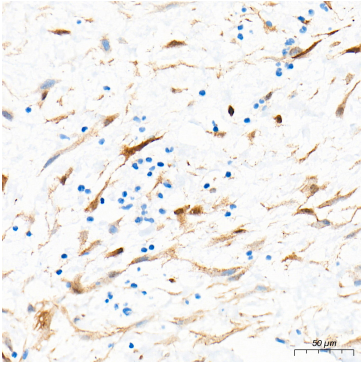


Confocal imaging of paraffin-embedded Mouse colon tissue using β -Catenin Rabbit pAb (A11932SP, dilution 1:200) followed by a further incubation with Cy3-conjugated Goat anti-Rabbit IgG (H+L) (AS007, dilution 1:500) (Red). DAPI was used for nuclear staining (Blue). High pressure antigen retrieval performed with 0.01M Citrate Buffer (pH 6.0) prior to IF staining. Objective: 40x.

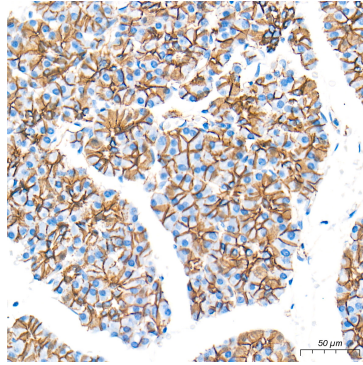


Confocal imaging of paraffin-embedded Rat colon tissue using β -Catenin Rabbit pAb (A11932SP, dilution 1:200) followed by a further incubation with Cy3-conjugated Goat anti-Rabbit IgG (H+L) (AS007, dilution 1:500) (Red). DAPI was used for nuclear staining (Blue). High pressure antigen retrieval performed with 0.01M Citrate Buffer (pH 6.0) prior to IF staining. Objective: 40x.

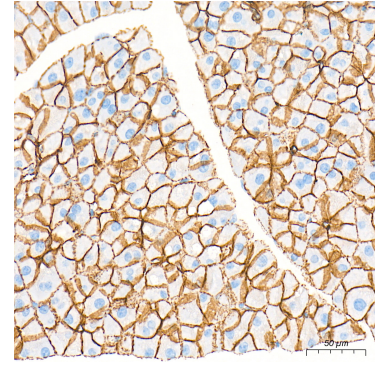
Validation Data



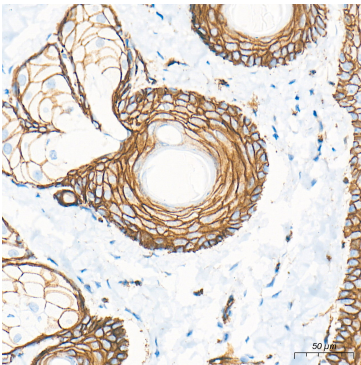
Immunohistochemistry analysis of paraffin-embedded Human solitary fibrous tumor tissue using β-Catenin Rabbit pAb (A11932SP) at a dilution of 1:1000 (40x lens). High pressure antigen retrieval performed with 0.01M Tris-EDTA Buffer (pH 9.0) prior to IHC staining.



Immunohistochemistry analysis of paraffin-embedded Human pancreas tissue using β-Catenin Rabbit pAb (A11932SP) at a dilution of 1:1000 (40x lens). High pressure antigen retrieval performed with 0.01M Tris-EDTA Buffer (pH 9.0) prior to IHC staining.



Immunohistochemistry analysis of paraffin-embedded Mouse pancreas tissue using β-Catenin Rabbit pAb (A11932SP) at a dilution of 1:1000 (40x lens). High pressure antigen retrieval performed with 0.01M Tris-EDTA Buffer (pH 9.0) prior to IHC staining.



Immunohistochemistry analysis of paraffin-embedded Rat skin tissue using β-Catenin Rabbit pAb (A11932SP) at a dilution of 1:1000 (40x lens). High pressure antigen retrieval performed with 0.01M Tris-EDTA Buffer (pH 9.0) prior to IHC staining.