

SAA3 Rabbit pAb

Catalog No.: A11948 **3 Publications**

Basic Information

Observed MW

14kDa

Calculated MW

13kDa

Category

Primary antibody

Applications

ELISA, WB

Cross-Reactivity

Human, Mouse, Rat

Background

Enables Toll-like receptor 4 binding activity and chemoattractant activity. Acts upstream of or within several processes, including I-kappaB phosphorylation; cellular response to interleukin-1; and response to stilbenoid. Located in extracellular space. Is expressed in cerebellum; ileum; liver; reproductive system; and thymus. Orthologous to several human genes including SAA2 (serum amyloid A2).

Recommended Dilutions

WB 1:500 - 1:2000

Immunogen Information

Gene ID

20210

Swiss Prot

Immunogen

A synthetic peptide corresponding to a sequence within amino acids 50-123 of mouse SAA3P (NP_035445.1).

Synonyms

I7R3; Saa-3; SAA3

Contact

☎ | 400-999-6126

✉ | cn.market@abclonal.com.cn

🌐 | www.abclonal.com.cn

Product Information

Source

Rabbit

Isotype

IgG

Purification

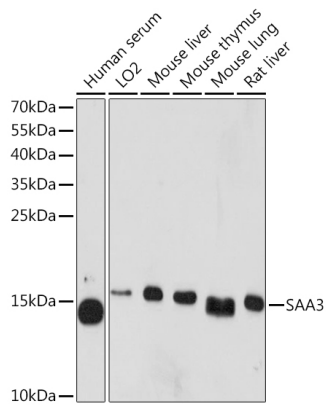
Affinity purification

Storage

Store at -20°C. Avoid freeze / thaw cycles.

Buffer: PBS with 0.02% sodium azide, 50% glycerol, pH7.3.

Validation Data



Western blot analysis of various lysates using SAA3 Rabbit pAb (A11948) at 1:1000 dilution.
Secondary antibody: HRP-conjugated Goat anti-Rabbit IgG (H+L) (AS014) at 1:10000 dilution.
Lysates/proteins: 25 μ g per lane.
Blocking buffer: 3% nonfat dry milk in TBST.
Detection: ECL Basic Kit (RM00020).
Exposure time: 5min.