

# BET1L Rabbit pAb

Catalog No.: A11951 **2 Publications**

## Basic Information

### Observed MW

14kDa

### Calculated MW

12kDa

### Category

Primary antibody

### Applications

ELISA, WB

### Cross-Reactivity

Human

## Background

Enables SNAP receptor activity. Involved in regulation of retrograde vesicle-mediated transport, Golgi to ER and retrograde transport, endosome to Golgi. Located in Golgi apparatus and endosome. Implicated in uterine fibroid. Biomarker of endometrial adenocarcinoma.

## Recommended Dilutions

WB 1:500 - 1:2000

## Immunogen Information

### Gene ID

51272

### Swiss Prot

Q9NYM9

### Immunogen

Recombinant fusion protein containing a sequence corresponding to amino acids 1-60 of human BET1L (NP\_057610.2).

### Synonyms

GS15; BET1L1; GOLIM3; HSPC197; BET1L

## Contact

☎ | 400-999-6126

✉ | [cn.market@abclonal.com.cn](mailto:cn.market@abclonal.com.cn)

🌐 | [www.abclonal.com.cn](http://www.abclonal.com.cn)

## Product Information

### Source

Rabbit

### Isotype

IgG

### Purification

Affinity purification

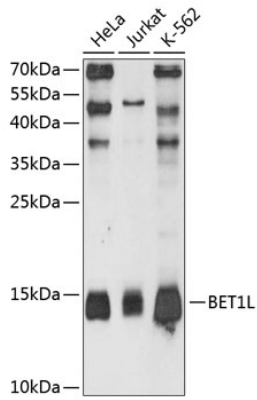
### Storage

Store at -20°C. Avoid freeze / thaw cycles.

Buffer: PBS with 0.01% thimerosal, 50% glycerol, pH7.3.

## Validation Data

---



Western blot analysis of various lysates using BET1L Rabbit pAb (A11951) at 1:3000 dilution. Secondary antibody: HRP Goat Anti-Rabbit IgG (H+L) (AS014) at 1:10000 dilution. Lysates/proteins: 25µg per lane. Blocking buffer: 3% nonfat dry milk in TBST. Detection: ECL Enhanced Kit (RM00021). Exposure time: 90s.