

Cytokeratin 1 (KRT1) Rabbit pAb

Catalog No.: A11958 **1 Publications**

Basic Information

Observed MW

66kDa

Calculated MW

66kDa

Category

Primary antibody

Applications

ELISA, WB

Cross-Reactivity

Mouse, Rat

Background

The protein encoded by this gene is a member of the keratin gene family. The type II cytokeratins consist of basic or neutral proteins which are arranged in pairs of heterotypic keratin chains coexpressed during differentiation of simple and stratified epithelial tissues. This type II cytokeratin is specifically expressed in the spinous and granular layers of the epidermis with family member KRT10 and mutations in these genes have been associated with bullous congenital ichthyosiform erythroderma. The type II cytokeratins are clustered in a region of chromosome 12q12-q13.

Recommended Dilutions

WB 1:500 - 1:1000

Immunogen Information

Gene ID

3848

Swiss Prot

P04264

Immunogen

Recombinant fusion protein containing a sequence corresponding to amino acids 200-450 of human Cytokeratin 1 (Cytokeratin 1 (KRT1)) (NP_006112.3).

Synonyms

K1; CK1; EHK; AEI2; EHK1; EPPK; KRT1A; NEPPK; Cytokeratin 1 (KRT1)

Contact

 | 400-999-6126 | cn.market@abclonal.com.cn | www.abclonal.com.cn

Product Information

Source

Rabbit

Isotype

IgG

Purification

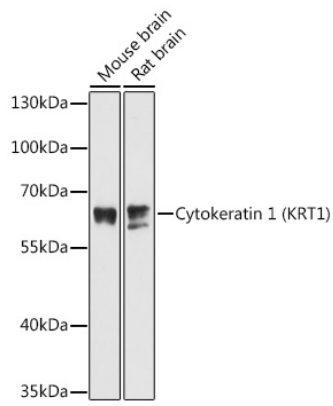
Affinity purification

Storage

Store at -20°C. Avoid freeze / thaw cycles.

Buffer: PBS with 0.01% thimerosal, 50% glycerol, pH7.3.

Validation Data



Western blot analysis of various lysates using Cytokeratin 1 (KRT1) Rabbit pAb (A11958) at 1:3000 dilution.

Secondary antibody: HRP Goat Anti-Rabbit IgG (H+L) (AS014) at 1:10000 dilution.

Lysates/proteins: 25µg per lane.

Blocking buffer: 3% nonfat dry milk in TBST.

Detection: ECL Basic Kit (RM00020).

Exposure time: 90s.